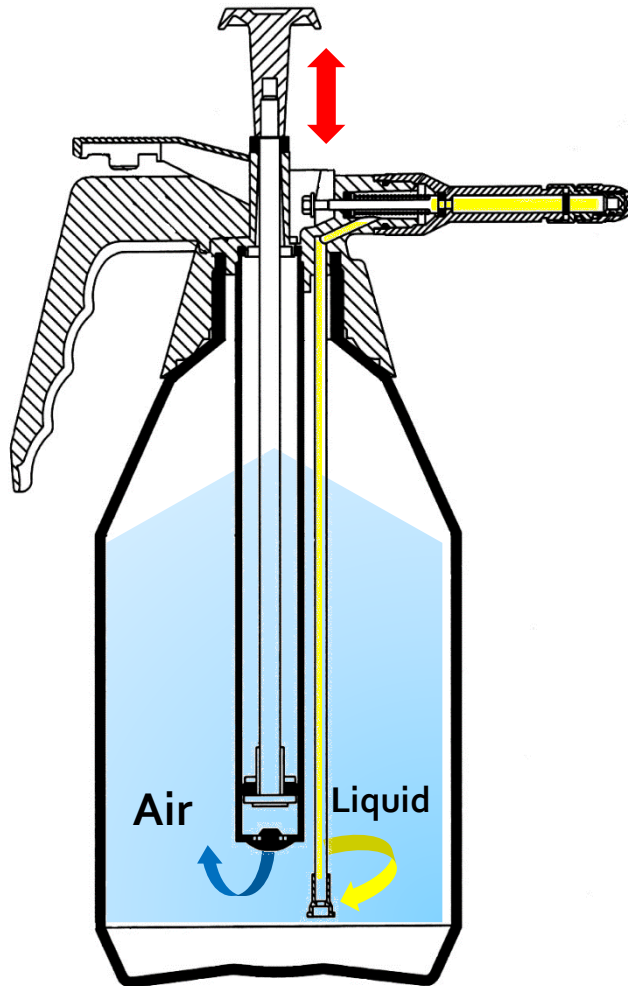




Compact Sprayers



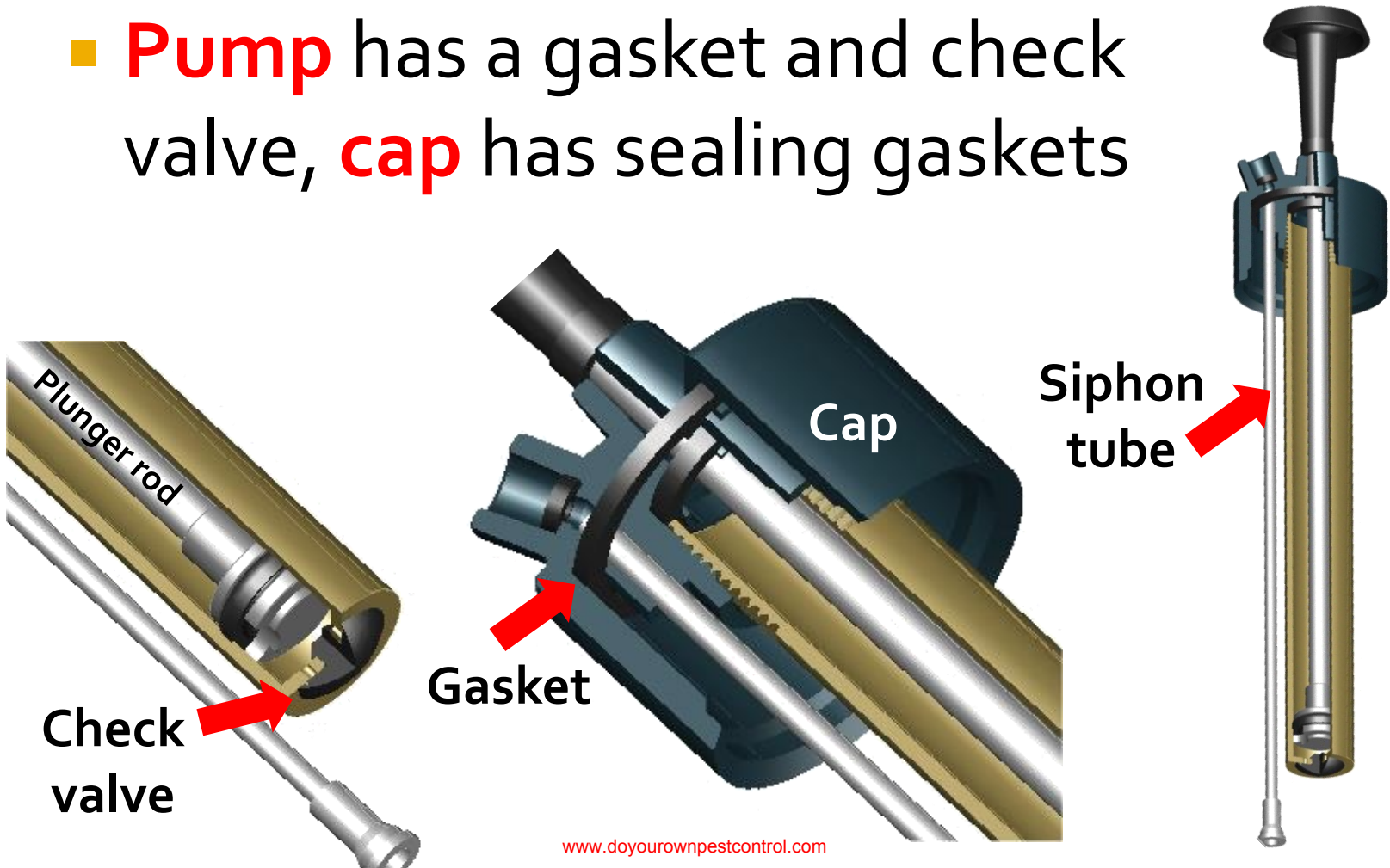
How It Works



- Pump creates 35 psi in the plastic or aluminum bottle
- Liquid moves up the siphon tube to the nozzle

How It Works

- **Pump** has a gasket and check valve, **cap** has sealing gaskets



AccuSpray Professional

- Aluminum bottle with Extenda-ban valve, and C+C nozzle



AccuSpray Bottles

- Spare bottles and caps allow service technician to carry extra quantity or more than one insecticide



AccuSpray Professional

- Aluminum bottle with Extenda-bar valve, and C+C nozzle



AccuSpray Professional



AccuSpray Standard

- Plastic bottle and valve with an aerosol and C+C nozzle

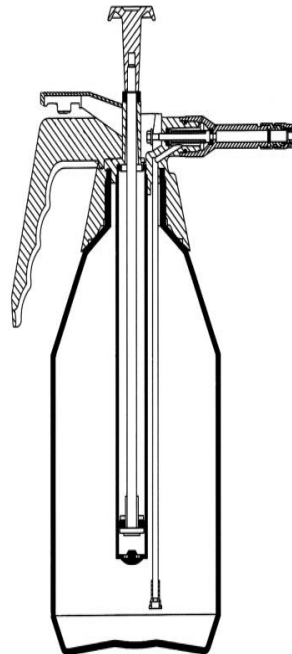


SpotSprayR

- Aluminum bottle and adjustable pin-cone nozzle



Belt holster



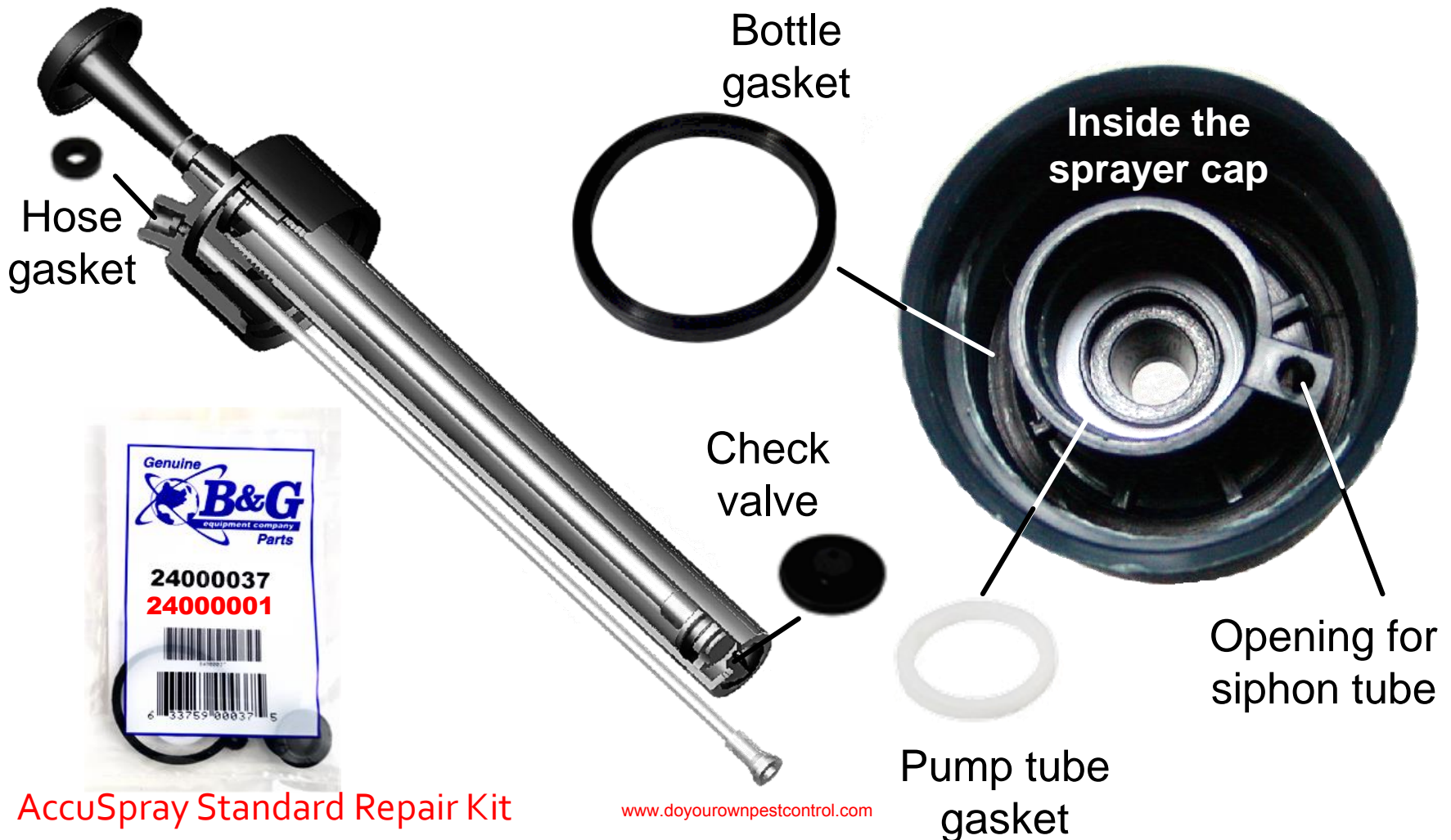
QT-1 Sprayer

- Plastic bottle with Viton seals and various tips:

Foaming
Injection
Fan spray
Adjustable



AccuSpray / SpotSprayR Repair Kit



AccuSpray Pro Repair Kit

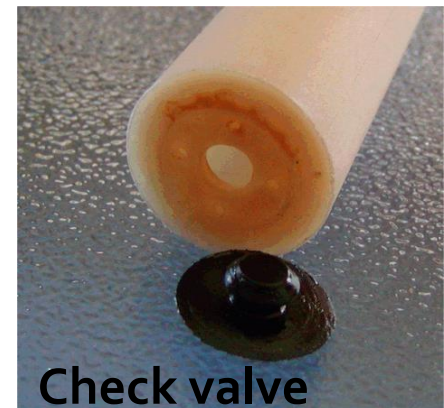


#24000037

AccuSpray Pro Repair Kit



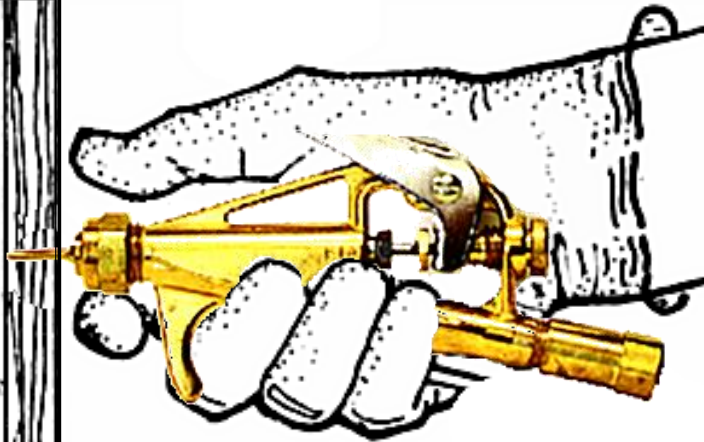
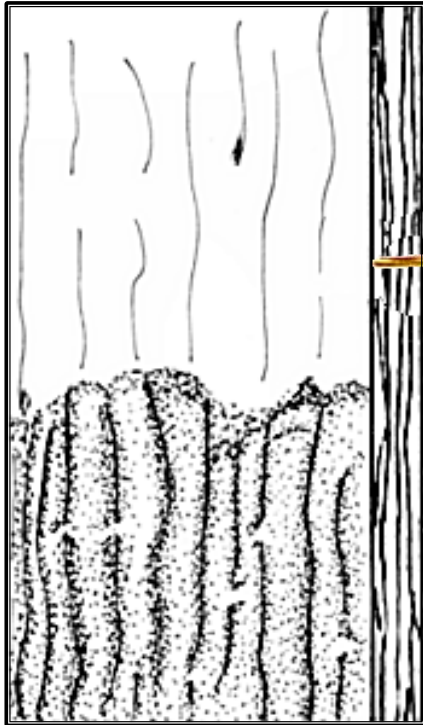
Plunger gasket



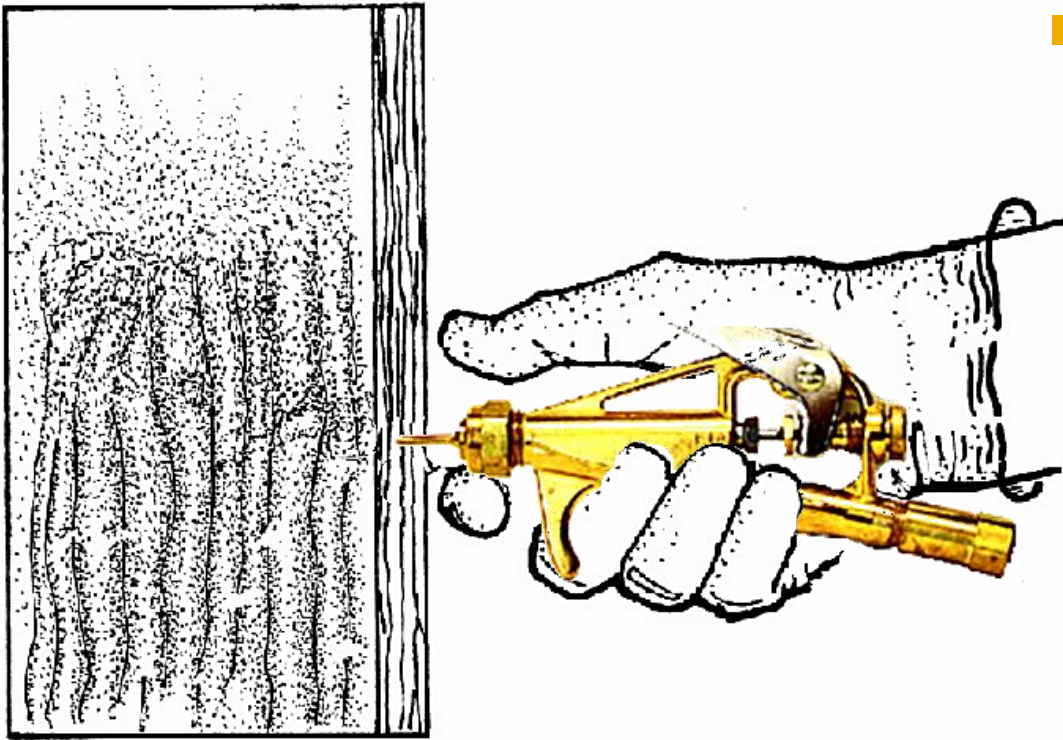
Check valve

Wood Injection

- Inject into **sound wood** to kill create a chemical fence

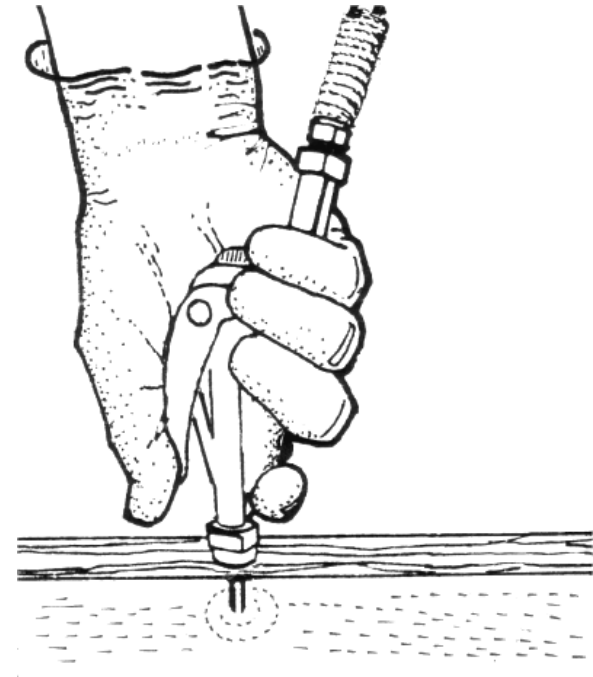
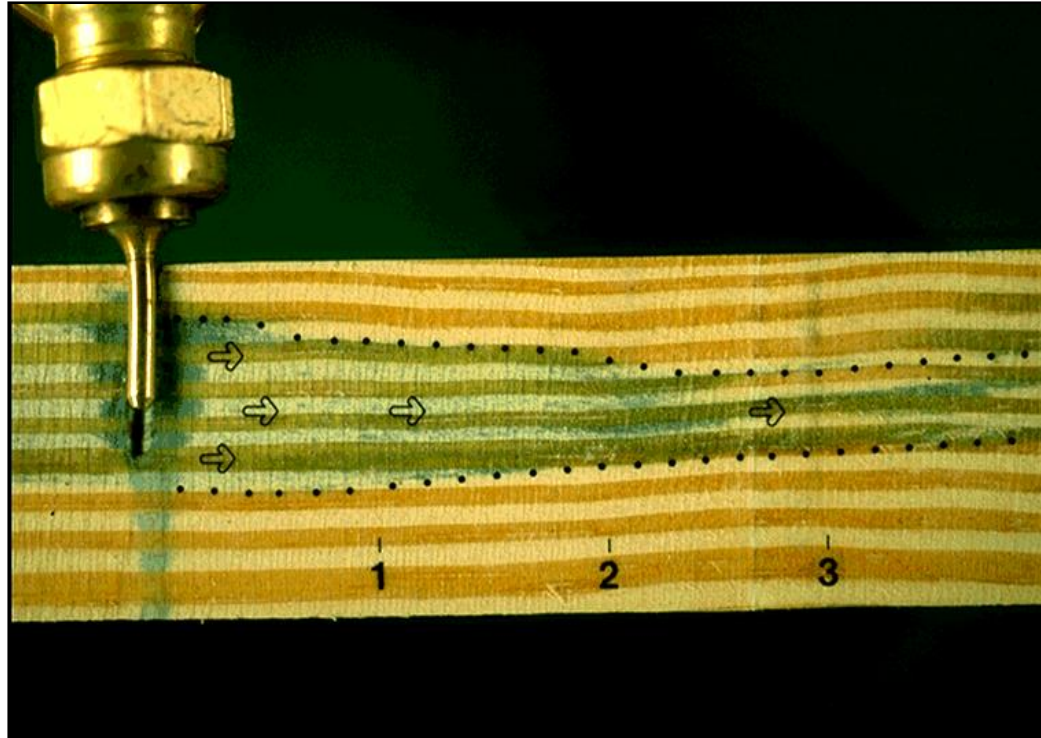


Wood Injection



- Inject into **infested wood** to kill termites and ants

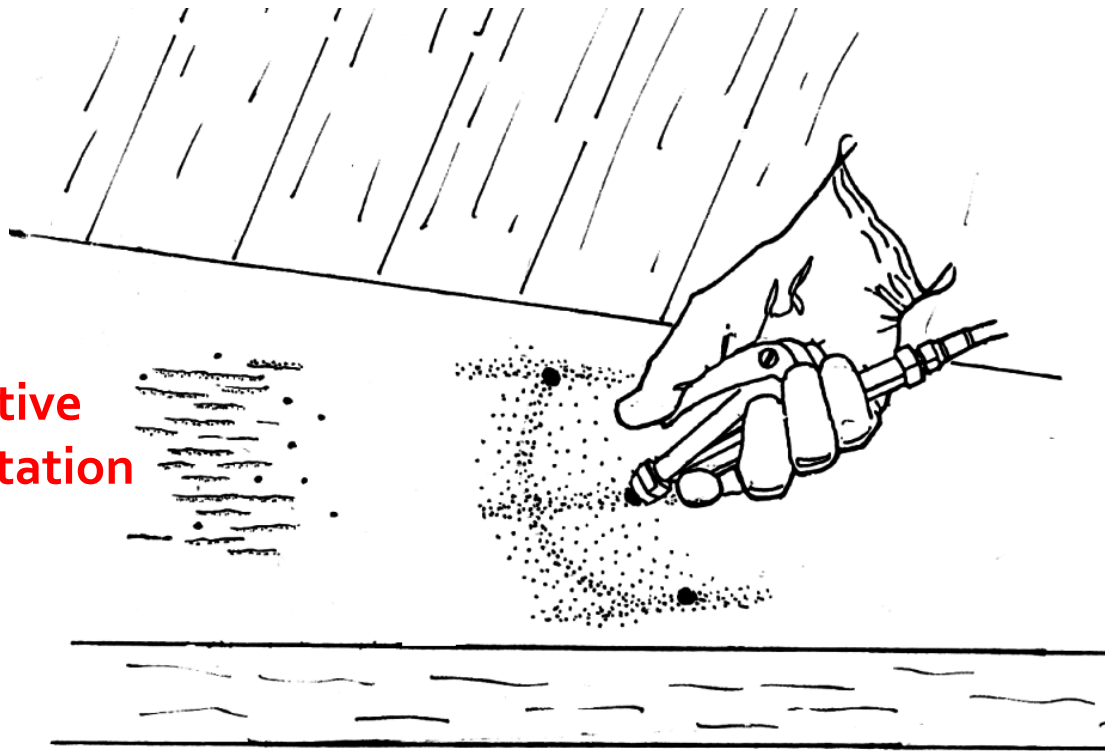
Liquid Movement



- Liquid moves with the grain when injected into sound wood

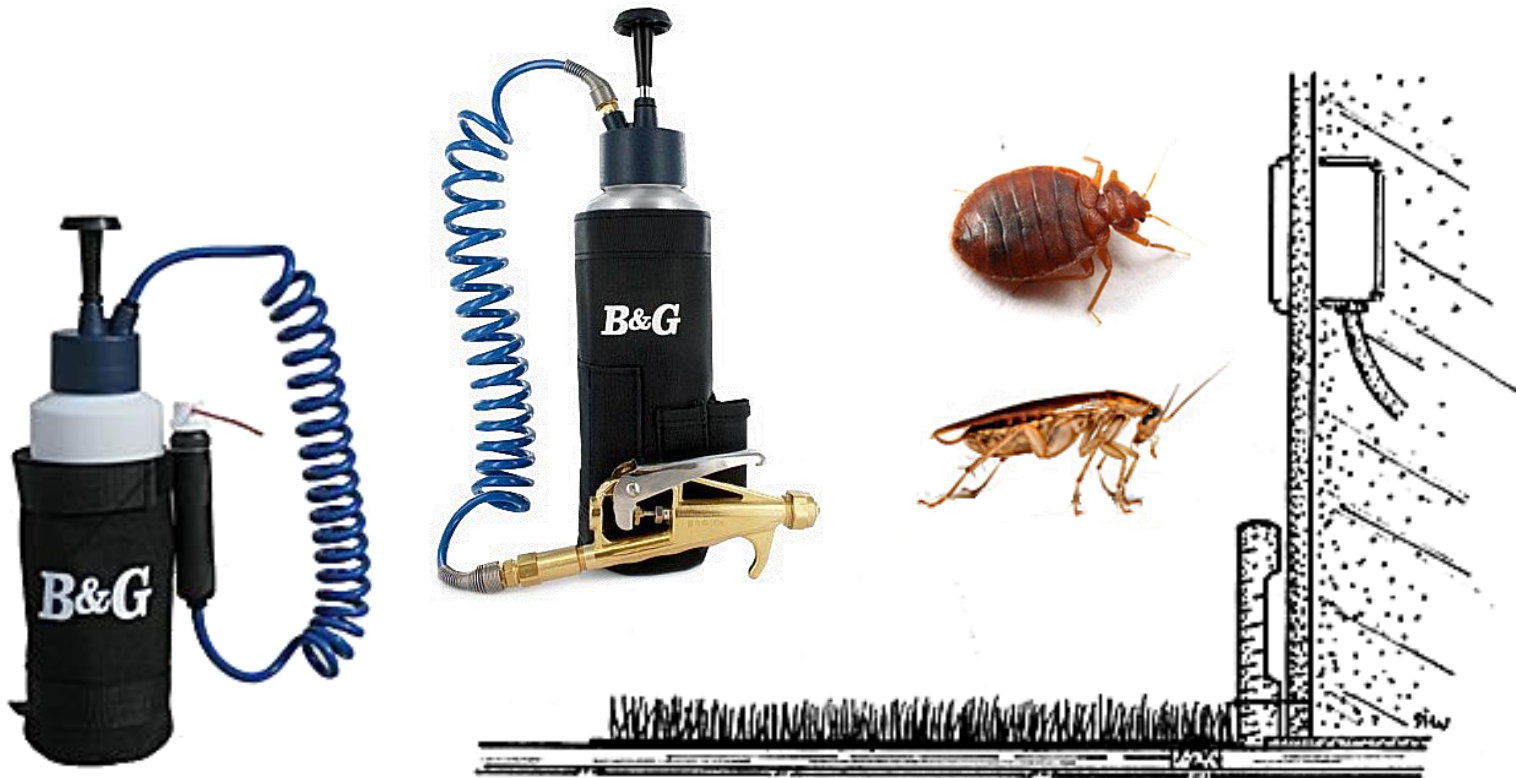
Chemical Fence

Active
infestation



■ **Insecticide Fence** created in wood around the active infestation

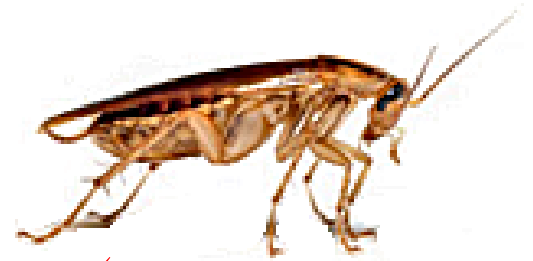
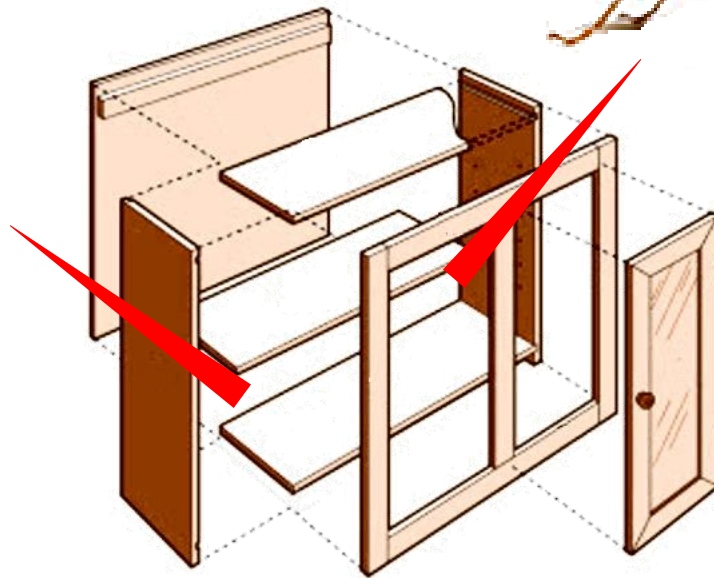
Baseboard Treatment



- Treat along baseboards

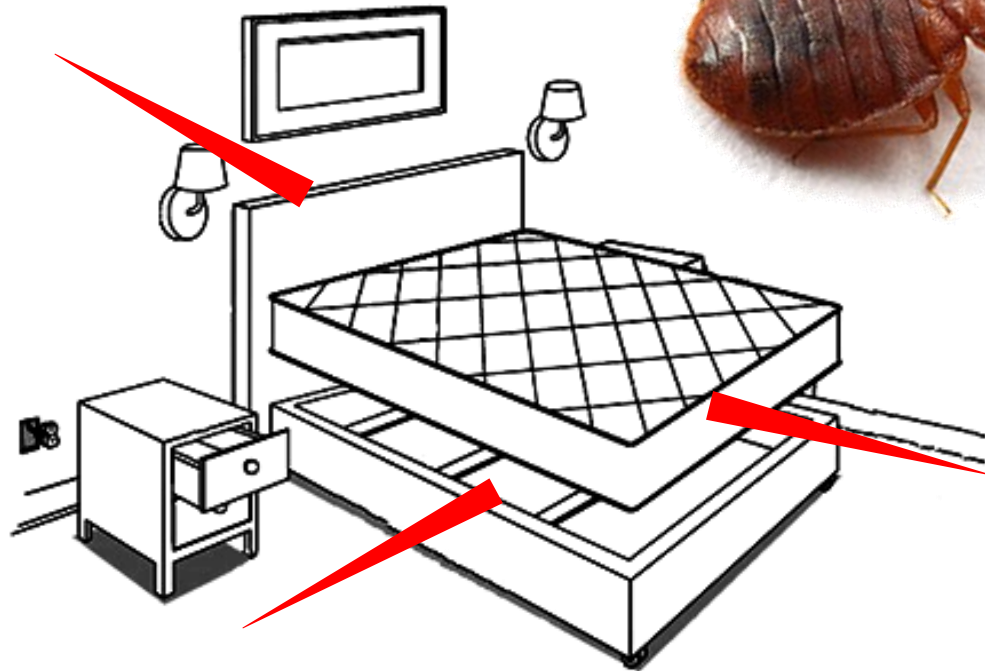
C+C / Cockroach Control

- **Crack and crevice** to cockroach harborages



C+C / Bed Bug Control

- **Crack and crevice** to bed bug harborages



Compact Sprayers

