



VERSAFOAMER 4000 USER'S MANUAL

Safety Precautions

- Do not connect this unit to external air or gas source; use only with supplied compressor.
- Do not pressurize an empty tank.
- Open tank cap slowly to release air before removing.
- Do not transport the unit while tank is pressurized.
- Do not treat voids with electrical outlets or cables.
- Always use a grounded (3 terminal) extension cord.



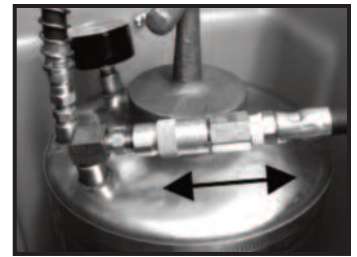
Operation

Foaming: Tank In Case

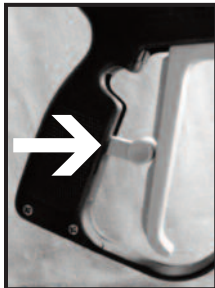
Use the 7-ft. hose to treat drains, wall voids, and other spaces with foam.

Foaming: Tank Removed

Fully pressurize tank, then disconnect tank from compressor hose and remove tank from case; apply foam in short bursts to floor drains and other sites.



Before Starting



- Secure all quick-connect hose connections.
- Engage lock on valve.
- Tighten tank cap until snug.

Operating Instructions

Mixing and Filling

- To ensure adequate air pressure in tank, add 3/4 to 1 gal. liquid to tank.
- Make sure switch on compressor is in the Off position, and unit is unplugged from wall connection.
- When mixing insecticides in the tank, use the gallon and liter marks on the side.
- Mix all insecticides according to label directions.

NOTE: Foaming agent must be added to tank to make foam.

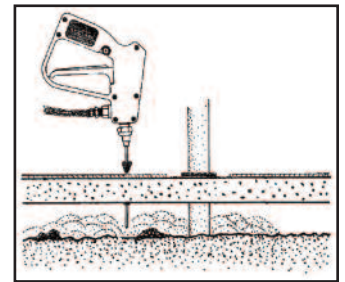
Pressurizing the Tank

- Connect unit to 110V or 220V outlet with 3 terminal electric cord.
- Start compressor by depressing the on/off switch.
- Compressor maintains pressure in the tank, it will automatically cycle on and off during normal use, but will not over-pressurize.

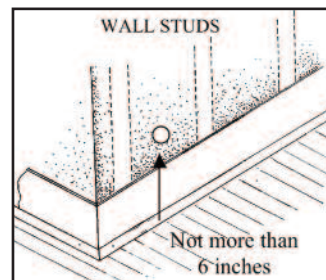
Sub-Slab Application



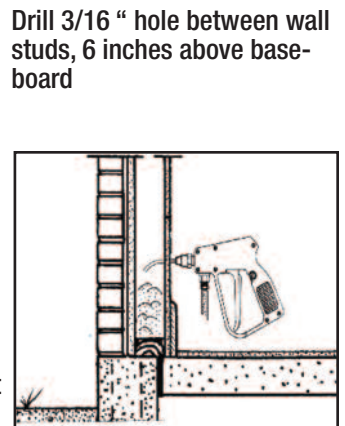
Drill 9/16 " hole through concrete; insert **straight tip** (use stopper to prevent leaking) and apply foam to void; 5 min. of foaming delivers about 1 gal. liquid into soil the hole.



Void-Space Application



Insert curved tip and rotate in an arc to deliver 7 one-second bursts (3.5 oz.) of foam to treat studs and sill plate below.



Care and Maintenance

- Flush tank, Gunjet valve, and hose with clean water regularly.
- Inspect hoses and hose connections for wear.
- Protect application tip when not in use.
- Store hose and valve in carry case when not in use.

VERSAFOAMER 4000



#	Order #	Description
1	16200007	Compressor, 110V
	16200020	Compressor, 220V
2	16200002	Quick-connect
3	22067312	30-L Gunjet valve
4	22030220	Hose, 8 ft.
5	22026500	Gauge, pressure
6	16200013	Curved tip
7	16200018	Straight tip
8	16200023	Drain application tip

Trouble Shooting

Problem: Tank not maintaining air pressure

- Solution:**
- Tighten tank cap
 - Check for gasket in tank cap, replace if missing

Problem: Tank not getting air pressure

- Solution:**
- Inspect/engage hose on compressor and quick connection

Problem: Applying only air not foam

- Solution:**
- Tank empty, add liquid insecticide
 - Siphon tube for foam port is plugged or damaged

Problem: Foam not thick or like water

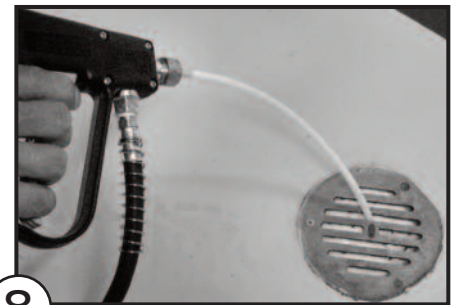
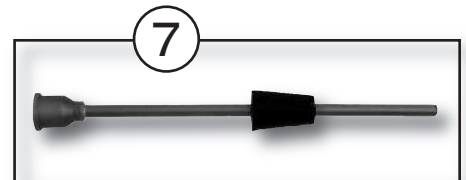
- Solution:**
- Increase amount of foaming agent in tank
 - Clean inside of hose from tank to 30-L Gunjet valve

Problem: Foam delivery is uneven

- Solution:**
- Clean screen filter behind mozzle in the 30-L Gunjet valve

Problem: Hose leaks at junction with tank

- Solution:**
- Replace Teflon washer, do not over-tighten washer when installing



Optional Drain Application Tip

B&G Help Line
800-544-8811



135 REGION SOUTH DRIVE • JACKSON, GA 30233
Toll Free 800-544-8811 • Phone 678-688-5601
www.bgequip.com • Fax 678-688-5633