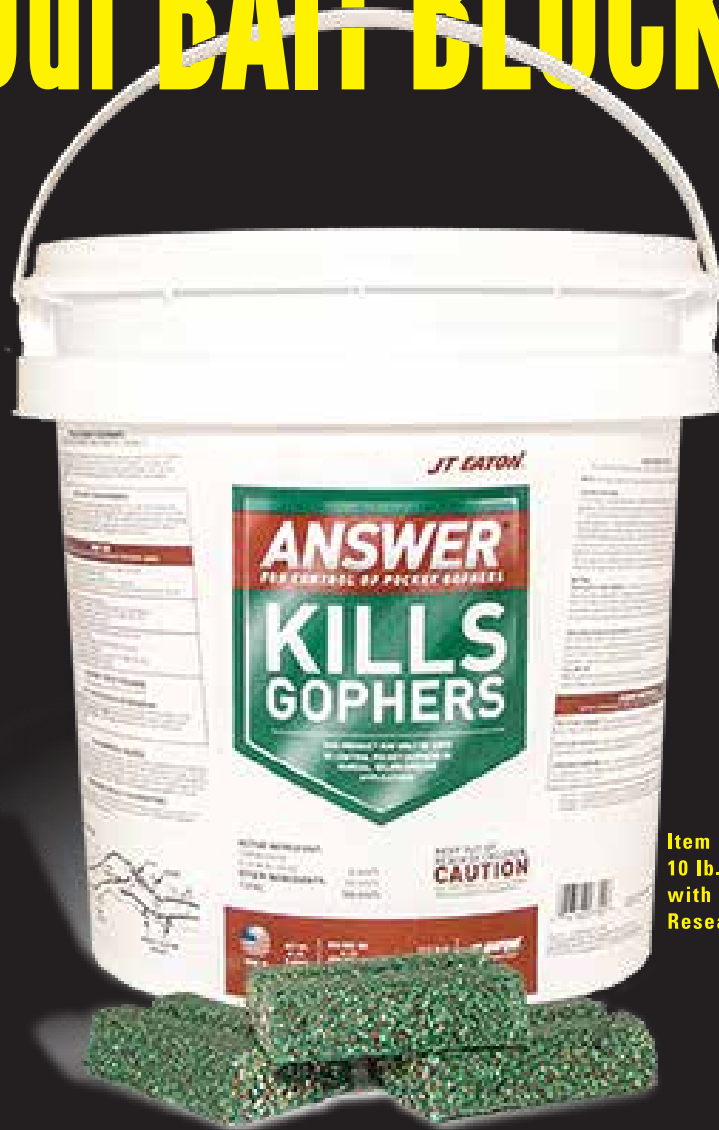


# Gophers Don't Have A Chance With Our BAIT BLOCK<sup>®</sup>



Item No. 277  
10 lb. Pail  
with Tamper-Evident  
Resealable Lid



FAMILY OWNED AND OPERATED

**JT EATON**<sup>TM</sup>  
SINCE 1932

1.800.321.3421  
www.jteaton.com

**PRECAUTIONARY STATEMENTS  
HAZARDS TO HUMANS AND DOMESTIC ANIMALS**

**CAUTION:** Harmful if swallowed or absorbed through the skin. Causes moderate eye irritation. Avoid contact with eyes, skin or clothing. Keep away from children, domestic animals and pets. Wear long-sleeved shirt, long pants, shoes, socks and waterproof gloves. Any person who retrieves carcasses or unused bait following application of this product must wear waterproof gloves.

**USER SAFETY REQUIREMENTS:**

- Follow manufacturer's instructions for cleaning/maintaining PPE. If no such instructions for washables exist, use detergent and hot water. Keep and wash PPE separately from other laundry.
- Remove PPE immediately after handling this product. Wash the outside of gloves before removing.
- As soon as possible, wash hands thoroughly after applying bait and before eating, drinking, chewing gum, using tobacco or using the toilet and change into clean clothing.

**FIRST AID**

HAVE THE LABEL WITH YOU WHEN OBTAINING TREATMENT ADVICE.

|                        |   |
|------------------------|---|
| IF SWALLOWED           | <ul style="list-style-type: none"> <li>Call a poison control center, doctor, or 1-800-222-1222 immediately for treatment advice.</li> <li>Have person sip a glass of water if able to swallow.</li> <li>Do not induce vomiting unless told to by a poison control center or doctor.</li> </ul>                      |
| IF ON SKIN OR CLOTHING | <ul style="list-style-type: none"> <li>Take off contaminated clothing.</li> <li>Immediately rinse skin with plenty of water for 15-20 minutes.</li> <li>Call a poison control center, doctor, or 1-800-222-1222 immediately for treatment advice.</li> </ul>  |
| IF IN EYES             | <ul style="list-style-type: none"> <li>Hold eye open and rinse slowly and gently with water for 15-20 minutes.</li> <li>Remove contact lenses, if present after 5 minutes, then continue rinsing eye.</li> <li>Call a poison control center, doctor, or 1-800-222-1222 immediately for treatment advice.</li> </ul> |

**TREATMENT FOR PET POISONING**

If animal eats bait, call a veterinarian at once.

**NOTE TO PHYSICIAN OR VETERINARIAN**

**Anticoagulant Diphacinone:** If swallowed, this material may reduce the clotting ability of the blood and cause bleeding. For humans or dogs that have ingested this product and/or have obvious poisoning symptoms (bleeding or prolonged prothrombin times), give Vitamin K1 intramuscularly or orally.

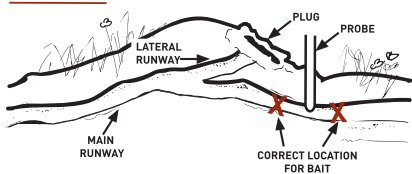
**ENVIRONMENTAL HAZARDS**

This pesticide is extremely toxic to mammals and birds. Dogs and other predatory and scavenging mammals and birds might be poisoned if they feed upon animals that have eaten this bait. Do not apply directly to water, or to areas where surface water is present or to intertidal areas below the mean high water mark. Runoff also may be hazardous to aquatic organisms in water adjacent to treated areas. Do not contaminate water when disposing of equipment wash water or rinsate.

**ENDANGERED SPECIES CONSIDERATIONS**

NOTICE: It is a Federal offense to use any pesticide in a manner that results in the death of a member of an endangered species. The use of this product may pose a hazard to Federally designated endangered/threatened species.

**GOPHER MOUND**



**ACTIVE INGREDIENT:**

Diphacinone  
[CAS# 82-66-6] 0.005%  
**OTHER INGREDIENTS:** 99.995%  
**TOTAL** 100.000%

**KEEP OUT OF  
REACH OF CHILDREN  
CAUTION**  
SEE SIDE PANELS FOR ADDITIONAL  
PRECAUTIONARY STATEMENTS



NET WT:  
10 LB.  
(4.54kg)

EPA REG. NO.  
56-57  
EPA EST. NO.  
61282-WF-1

ITEM#  
277

**JT EATON™**  
and more  
www.jteaton.com

**DIRECTIONS FOR USE:**

It is a violation of Federal law to use this product in a manner inconsistent with its labeling.

**NOTE:** This label must be in the possession of the user at the time of pesticide application.

**USE RESTRICTIONS:**

This product may only be used in manual, subterranean applications to control valley pocket gophers (Thomomys bottae), northern pocket gophers (T. talpoides), Mazama pocket gophers (T. mazama), Townsend's pocket gophers (T. townsendi), giant pocket gophers (T. bulvivorus), Sierra pocket gophers (T. monticola) and plains pocket gophers (Geomys bursarius) in RANGELAND, CROPLAND (grain fields, forage crops, hay and alfalfa crops and vegetable crops), FOREST AND NONCROP AREAS including parks, nurseries and around homes. This product may only be applied at the use sites and by the application methods indicated on this label. Bait must be applied directly into pocket gopher burrow systems. Do not apply this product above the ground surface. Do not apply this product by use of a mechanical burrow builder machine or any other type of mechanical application equipment, including mechanized probes. Do not broadcast bait.

**BAITING:**

**Place baits in main runways:** To locate main runways, probe 12 to 18 inches from the surface mound on the side which is flattened or depressed using a burrow probe or a smooth metal rod. When response on probe suddenly decreases, probe is in the main runway. Open the runway with the probe, a spade or shovel. Place one BAIT BLOCK® into each opening of the runway and cover the opening securely to exclude light. Do not permit the loose soil to cover bait.

**Place baits at two or three locations** in each main burrow (runway) system. A pocket gopher will normally travel to all portions of its burrow system within a few days. As some gophers may die above ground, check the area periodically for 10 to 15 days after treatment. Bury or incinerate (if permitted locally) any dead animals found. If pocket gopher activity persists 2 weeks after treatment, bait the active burrow a second time.

Wearing waterproof gloves, collect and dispose of dead, exposed animals. Dispose of leftover bait in accordance with disposal instructions. If reinfestation does occur, repeat treatment.

**STORAGE AND DISPOSAL**

DO NOT CONTAMINATE WATER, FOOD, OR FEED, BY STORAGE OR DISPOSAL.

**PESTICIDE STORAGE:** Store in original container in a cool, dry place inaccessible to children and pets. Keep containers closed and away from other chemicals.

**PESTICIDE DISPOSAL:** Wastes resulting from the use of this product may be placed in trash or delivered to an approved waste disposal facility.

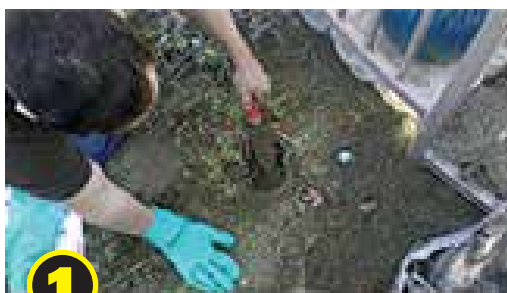
**CONTAINER HANDLING:** Non-refillable container. Do not reuse or refill this container. Triple rinse (or equivalent). Then offer for recycling or reconditioning or puncture and dispose of in a sanitary landfill, or by incineration.

NOTICE: To the extent consistent with applicable law, buyer assumes all risks of use, storage or handling of this material not in strict accordance with directions given hereon. The efficacy of the product may be reduced under high moisture conditions.

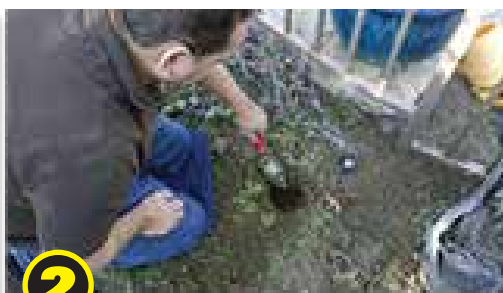


EPA04142011/INV01042013  
FNW27710PJTJ

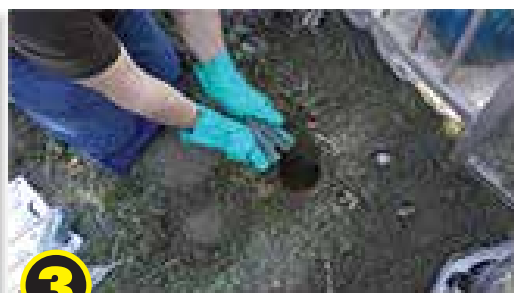
Mfg. for: J.T. EATON & CO., INC.,  
1293 East Highland Road, Twinsburg, OH 44087 • U.S.A.  
ANSWER® and BAIT BLOCK® are registered trademarks and  
JT EATON™ is a trademark of J.T. EATON & CO., INC. ©2013



**1**  
**OPEN THE RUNWAY  
WITH A SPADE OR SHOVEL**



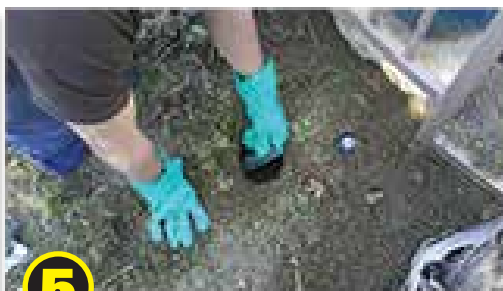
**2**  
**THIS LOCATION HAS  
EXPOSED 2 RUNWAYS**



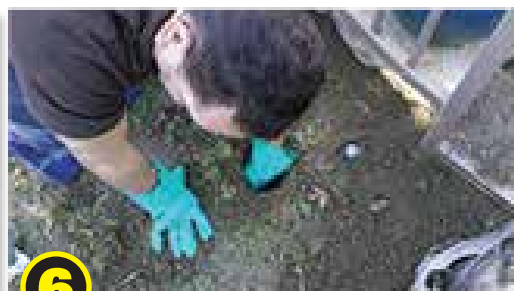
**3**  
**BREAK BLOCK LENGTHWISE  
INTO 2 PIECES**



**4**  
**PLACE A BLOCK INTO EACH RUNWAY**



**5**  
**PUSH BLOCK INTO RUNWAY  
AS FAR AS POSSIBLE**



**6**  
**PUSH BLOCK INTO RUNWAY  
AS FAR AS POSSIBLE**

**7**  
**COVER THE RUNWAY OPENING SECURELY  
TO PREVENT LIGHT FROM ENTERING TUNNEL.  
BE CAREFUL NOT TO COVER BAIT.**

**8**  
**SOME GOPHERS MAY DIE ABOVE GROUND.  
BE SURE TO CHECK AREA EVERY COUPLE OF DAYS  
AND REMOVE DEAD GOPHERS.**