

adios™ COMBO BAIT Cubes

A Bait Containing a
Rodenticide to Kill Norway
Rats, Roof Rats and House
Mice and an Insecticide to
Aid in the Reduction of
Flea Populations on
Listed Rodent Hosts.

This product may only be used inside and within 50 feet of
buildings or inside transport vehicles (ships, trains or aircraft).

ABOUT
288
BLOCKS



Keep Out of Reach of Children

CAUTION

See back panel for
First Aid and additional
Precautionary Statements

ACTIVE INGREDIENTS:

Diphacinone (CAS No. 82-66-6)0.005%
Imidacloprid (CAS Number 138261-41-3).....0.020%

OTHER INGREDIENTS 99.975%

TOTAL 100.000%

EPA Est. 72500-CO-1
EPA Reg. No. 72500-18

Manufactured by:
Scimetrics

LTD. CORP.

P.O. Box 1045

Wellington, CO 80549

Obtained by Global Safety Management, New global safety net.com (877) 883-7460

**RODENTICIDE
+
INSECTICIDE**

KILLS

Norway Rats, Roof Rats
and House Mice.

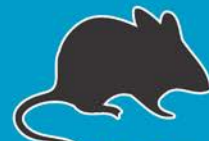
Rats and mice start to
die 4 to 5 days after
feeding begins.



FLEAS



RATS



MICE

NET WT. 18 LBS (8.16 kg)

DIRECTIONS FOR USE

It is a violation of Federal law to use this product in a manner inconsistent with its labeling.

This label must be in the user's possession at the time of product application.

Apply this product only for the sites, pests and application methods specified on this label.

If sufficient quantities of this bait are ingested, the use of this product may aid in the reduction of fleas that commonly infest listed rodent hosts, including *Xenopsylla cheopis*.

Read this Label:

Read this entire label and follow all use directions and use precautions.

IMPORTANT: Do not expose children, pets or other non-target animals to rodenticides. To help prevent accidents:

1. Store product not in use in locations out of reach of children and pets.
2. Apply bait in locations out of reach of children, pets, domestic animals and non-target wildlife in tamper-resistant bait stations. These stations must be resistant to destruction by children under six years of age and dogs, and must be used in a manner that prevents such children from reaching into bait compartments and obtaining bait. If bait can be shaken from stations when they are lifted, units must be secured or otherwise immobilized. Even stronger bait stations are needed in areas open to hoofed livestock, raccoons, bears or other potentially destructive animals or in areas prone to vandalism.
3. Dispose of product container, as well as unused, spoiled and unconsumed bait, as specified on this label.

Note: Bait stations are mandatory for outdoor, above-ground use. Tamper-resistant bait stations must be used if children, pets and non-target mammals, or birds may have access to bait.

Use Restrictions: Use this product to kill only Norway rats, roof rats and house mice, and to aid in the reduction of their flea populations in and around homes, in and around non-residential buildings, industrial/agricultural/commercial/public buildings and similar man-made structures. This product can also be used inside transport vehicles (ships, trains and aircraft). Adios™ Combo Bait can also be used in and around related port or terminal buildings. Do not place bait in areas where there is a possibility of contaminating food or surfaces that come into direct contact with food. Do not use in edible product areas of feed processing plants, restaurants or other areas where food or feed is commercially prepared or processed. Do not contaminate food/feed or food/feed-handling equipment or place near or inside ventilation duct openings. Do not use this product to kill listed species within the occupied habitats of threatened or endangered rodents. Wear gloves when handling bait or animal carcasses. Do not apply farther than 50 feet from buildings. Do not sell this product in individual containers holding less than 4 pounds of bait.

Do not use this product where non-target species are likely to be adversely affected by it or where threatened or endangered species potentially at risk from it are present. Do not allow young children, pets, domesticated animals or persons not associated with the bait application to be in areas where the bait is being applied. Wear gloves when applying bait. With detergent and hot water, wash all utensils used for applying bait. Do not use these utensils for mixing, holding or transferring foods or feeds retained by

Selection of Treatment Areas: Determine areas where rats or house mice will most likely find and consume bait. Generally, these areas will be along walls, by gnawed openings, in or beside burrows, in corners and concealed places, between floors or walls, beside burrow openings and other locations where signs of rodents have been seen. Remove as much alternative food as possible.

APPLICATION DIRECTIONS:

Rats: Apply 3 to 15 blocks per bait placement. Space placements at intervals of 15 to 30 feet in infested area. Maintain an uninterrupted supply of fresh bait for at least 10 days or until there no longer are signs of new feeding by rats.

House Mice: Apply 1 bait block per placement. Space placements at intervals of 8 to 12 feet in infested area. At points of extremely high mouse activity use 2 bait blocks. Maintain an uninterrupted supply of fresh bait for at least 15 days or until fresh signs of feeding by house mice cease to appear.

Follow-up (Rats & Mice): Immediately replace contaminated or spoiled bait. While wearing waterproof gloves, properly collect and dispose of all dead animals and leftover bait. To discourage reinfestation, limit sources of rodent food, water and harborage as much as possible. If reinfestation occurs, repeat treatment. Where a continuous source of infestation is present, establish permanent bait stations. Regularly check the stations and replace bait as needed.

STORAGE AND DISPOSAL

Do not contaminate water, food or feed by storage or disposal.

Pesticide Storage: Store in original container in a cool, dry place inaccessible to children and pets. **Pesticide Disposal:** Wastes resulting from the use of this product may be disposed of on site or at an approved waste disposal facility. **Container Handling:** Non-refillable container; do not reuse or refill this container. Offer for recycling, if available, or reconditioning, if appropriate; otherwise, dispose of empty container in a sanitary landfill; or by incineration.

Lot Number: See Container Lid

PRECAUTIONARY STATEMENTS

Hazards to Humans and Domestic Animals

CAUTION: Harmful if swallowed or absorbed through the skin. Keep away from children, domestic animals and pets. Do not get in eyes, on skin or on clothing. **Personal Protective Equipment (PPE):** All handlers (including applicators) must wear: shoes plus socks and waterproof gloves. Any person who retrieves carcasses or unused bait following application of this product must wear gloves.

First Aid

Have the product container or label with you when calling a poison control center or doctor, or going for treatment. You may also contact the National Poison Information Center at 1-800-858-7378 for emergency medical treatment information.

If swallowed, immediately call a poison control center or doctor for treatment advice. Have person sip a glass of water if able to swallow. Do not induce vomiting unless told to do so by the poison control center or doctor. Do not give anything by mouth to an unconscious person.

If on skin or clothing, take off contaminated clothing. Immediately rinse skin with plenty of water for 15-20

treatment advice.

If in eyes, hold eye open and rinse slowly and gently with water for 15-20 minutes. Remove contact lenses, if present, after the first 5 minutes, then continue rinsing eye. Call a poison control center or doctor for treatment advice.

Treatment for Pet Poisoning

If animal eats bait, call a veterinarian at once.

Note to Physician or Veterinarian

Contains the anticoagulant Diphacinone. If swallowed, this material may reduce the clotting ability of the blood and cause bleeding. For humans or animals ingesting bait and/or showing poisoning signs (bleeding or elevated prothrombin times), give Vitamin K1.

User Safety Requirements

Follow manufacturer's instructions for cleaning/maintaining PPE. If no such instructions for washables exist, use detergent and hot water. Keep and wash PPE separately from other laundry. Remove PPE immediately after handling this product. Wash the outside of gloves before removing. As soon as possible, thoroughly wash hands after applying bait and before eating, drinking, chewing gum, using tobacco or using the toilet, then change into clean clothing.

Environmental Hazards

This product is highly toxic to aquatic invertebrates and toxic to mammals and birds. Dogs and predatory and scavenging mammals and birds might be poisoned if they feed upon animals that have eaten this bait. Do not apply this product directly to water, or to areas where surface water is present or to intertidal areas below the mean high water mark. Do not contaminate water when disposing of equipment washwaters.

WARRANTY

To the extent consistent with applicable law, Manufacturer and Seller make no warranty, express or implied, concerning the use of this product other than indicated on the label. Buyer assumes all risk of use and/or handling of this material when such use and/or handling is contrary to label instructions.

Manufactured by:

Scimetrics
LTD. CORP.

New Solutions to Old Problems

P.O. Box 1045 Wellington, CO 80549
(970) 482-1330 mole@scimetricsltd.com

Label Version 6/26/12

