



# What's UP?

**CoreTect 2-08**

News from the Bayer Environmental Science Development Team

( Eastern )

## CoreTect™ Tablets for Easy, Long-Lasting Insect Control

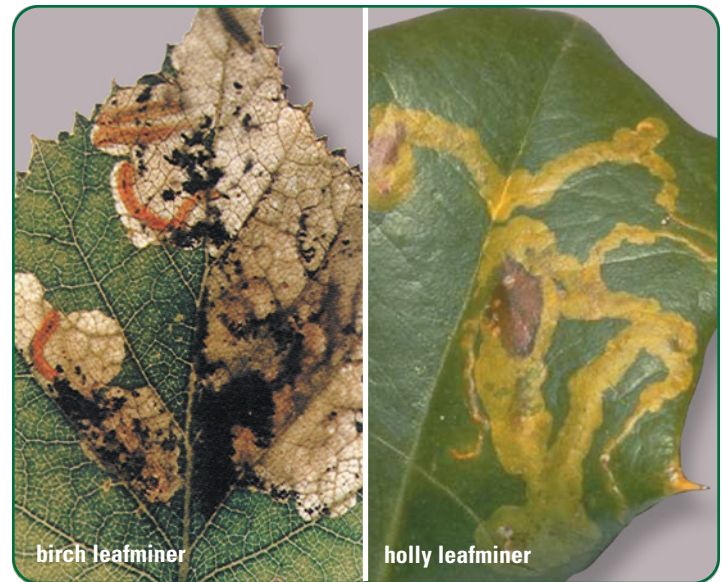
Lawn care operators (LCOs) today are looking for ways to save time and reduce costs while providing effective, long-lasting insect control for their customers. And golf course superintendents who typically don't provide tree-and-shrub care as part of their routine maintenance need a fast, easy and effective method for controlling pests in landscape plantings.

A new product incorporating the proven performance of long-lasting Merit® insecticide plus a fertilizer is now available for use by turfgrass and landscape management professionals. CoreTect™ tablets may be applied directly to the soil for long residual insect control on both newly planted and established trees, shrubs and ornamentals.

**Each 2.5 gram tablet contains 20 percent active ingredient plus 12-9-4 NPK fertilizer. Other product benefits include:**

- Systemic action with same ingredient as Merit
- Applied directly to soil. No water or spray tanks needed
- Controlled-release for extended insect control
- Promotes growth and mediates stress

When plants are under stress, photosynthesis, water use and respiration become inefficient; this inefficiency can result in long-term inhibition of growth, wilting, or even death of the tree or shrub. Studies have shown that the survival and growth rates of both established and transplanted trees and shrubs are significantly increased when CoreTect tablets are used at planting.

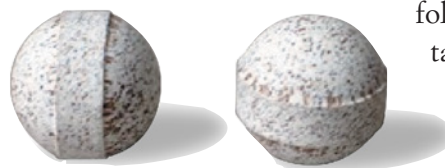


*The above photos show damage caused by the birch leafminer and the holly leafminer.*

Applied at transplanting or to established trees and shrubs, CoreTect tablets deliver long-lasting control of insect pests. Landscape managers and contractors can avoid spraying pesticides and save on equipment and labor costs, while improving plant health. In addition, CoreTect tablets allow professionals to easily protect plants in hard-to-treat locations.

### **Ease of application:**

The CoreTect tablets are applied directly to the soil with **NO** water, **NO** spray tanks and **NO** mixing, handling or messy cleanup. And **NO** foliar application is required. The tablet is ideal for sensitive areas where spray drift and customer concerns are an issue.



*CoreTect Tablets*

# What's UP?

News from the Bayer Environmental Science Development Team

The controlled-release, systemic properties of CoreTect tablets allow for outstanding, season-long control of the most common damaging tree and shrub insect pests, including:

- Adelgids (*including hemlock woolly adelgid*)
- Aphids
- Round-Headed Borers
- Flat-Headed Borers
- Leaf beetles
- Leafminers
- Mealybugs
- Soft scales
- Whiteflies

**Application tips:** The labeled dose for CoreTect is 2-3 tablets per inch of trunk diameter (dbh) or foot of shrub height. For best results on established ornamentals, CoreTect tablets should be placed as close to the fine absorptive roots as possible. For most deciduous trees and shrubs, an adequate number of these roots are located within 6 – 24 inches of the trunk, depending on the tree size.

Simply poke holes around the tree and put two or three CoreTect tablets in each hole, two to five inches below the soil surface, next to the plant. Ensure that the tablets are completely covered with soil after application.

**Improved stress tolerance:** The active ingredient in CoreTect also helps the plant promote growth and mediate plant stress. Plants treated with CoreTect utilize energy more efficiently. Thus, the plant can more effectively fight the toxic effects of stress without depleting the energy needed for growth and flowering.

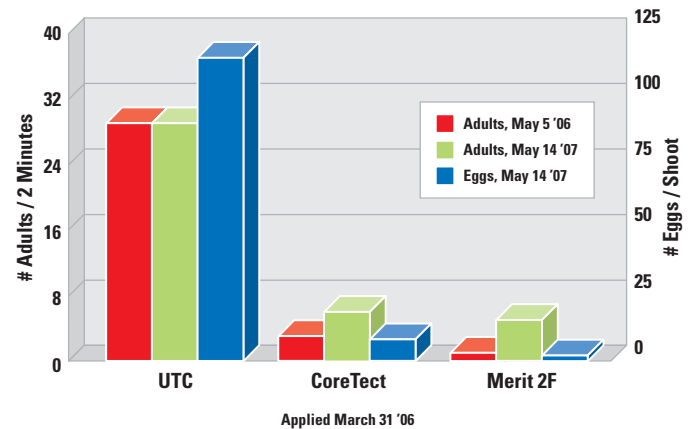
Improved stress tolerance + season-long insect control = healthier trees and ornamentals.

**CoreTect is more than a product. It is an investment in healthy trees and shrubs. Please read and refer to the label for specific use directions.**

*Author: Rich Hanrahan*

## CoreTect vs. hawthorn lacebug

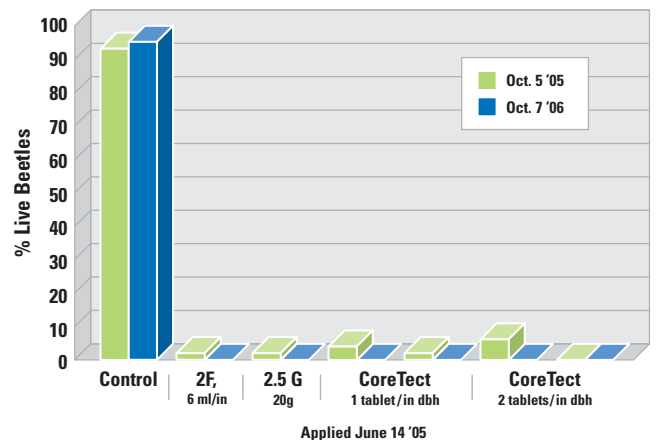
Connecticut, 2006-2007



*A 2006 Connecticut study compared CoreTect tablets with Merit 2F insecticide for control of hawthorn lacebugs.*

## CoreTect vs. Japanese beetle on roses

Minnesota, 2006



*A 2005 study at the University of Minnesota compared the use of one and two CoreTect tablets with Merit 2F and Merit 2.5 G for control of Japanese beetles on roses.*



**BACKED**  
by **BAYER™**