

BEDBUG - DUST MITES - ALLERGENS

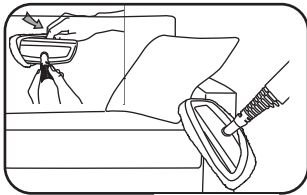
GO TO VAPAMORE.COM TO SEE THE MR-100 PRIMO INSTRUCTIONAL VIDEO

WHY USE STEAM?

The Vapamore MR-100 Primo produces steam with an output temperature between 210° to 220° degrees. Pests such as bedbugs, dust mites and other allergens along with their eggs are killed on contact at a temperature of 180° degrees. Using steam is an extremely effective and chemical free way to kill these pest along with E. Coli, Salmonella, H1N1 and other bacteria or viruses without leaving any harmful chemical residue behind. The tools supplied with the Vapamore MR-100 Primo allow you to treat all areas where these pests can hide such as bedding, sofas, furniture, pillows, carpet, cracks and crevices that are ideal hiding places for pests.

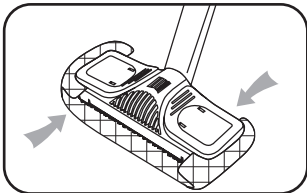
BEDDING / FURNITURE

Fig. 25



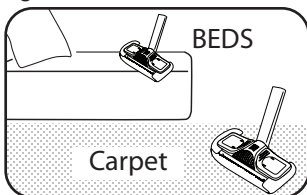
The clothes / fabric tool with the cotton cover is ideal for treating bedding, furniture, pillows, and carpet areas around bed posts and base boards. Start by installing the supplied cotton cover on the clothes - fabric / smooth surface tool. Apply light consistent pressure and slowly pass it along the surface (1" per second) to insure the area being treated has a chance to come to full temperature killing pests and their eggs. (Fig.25)

Fig.26



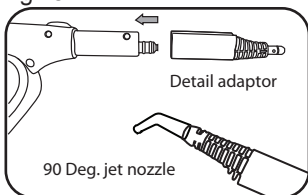
The floor cleaning head with micro fiber cover is also great for treating large surface areas such as bedding, furniture, and carpet areas. Start by installing the supplied micro fiber cover on the floor cleaning head. The micro fiber cover thermal core maintains full temperature during use and allows the floor cleaning head to glide over fabric or carpet. (Fig.26)

Fig.27



Apply light consistent pressure and slowly pass it along the surface (1' per second) to insure the area being treated has a chance to come to full temperature killing pests and their eggs. (Fig.27)

Fig.28



The detail adaptor can also be used on its own as a straight jet nozzle tool or along with the 90 degree jet nozzle attachment. These tools are great for cracks and crevices. Make sure to concentrate the steam directly on the area to be treated with as minimal distance as possible, no more than 1" away. The steam will condense and cool off and not be effective to kill pests and their eggs if the jet tip is not directly on the surface being treated. The detail adaptor can be attached directly to the steam gun or to any of the extension tubes. (Fig. 28)