



2021 SPECIFICATIONS

5-POSITION VARIABLE PRESSURE SPRAYERS



Nickname	Storm 2.5™		Cyclone 2.5™		Typhoon 2.5™		Monsoon 2.5™	
Model #	FZVAA6-2.5		FZVAAJ-2.5		FZVAAK-2.5		FZVABN-2.5	
Tank Type	2.5-Gallon Backpack		4-Gallon Backpack		4-Gallon Backpack		9-Gallon Roller	
Pump Type	Standard-Duty Diaphragm Pump		Standard-Duty Diaphragm Pump		Heavy-Duty Diaphragm Pump		Heavy-Duty Diaphragm Pump	
Working Pressure	Low Speed (open flow)	High Speed (dead head)	Low Speed (open flow)	High Speed (dead head)	Low Speed (open flow)	High Speed (dead head)	Low Speed (open flow)	High Speed (dead head)
	7 psi	60 psi	7 psi	60 psi	7 psi	115 psi	7 psi	115 psi
Battery Voltage / Capacity	18V / 2.6Ah		18V / 2.6Ah		18V / 5.2Ah		18V / 5.2Ah	
Battery Type	LG 18650 Lithium Ion*		LG 18650 Lithium Ion*		LG 18650 Lithium Ion*		LG 18650 Lithium Ion*	
Charger	21V / 1A		21V / 1A		21V / 2.5A		21V / 2.5A	
Charge Time	~2 hours		~2 hours		~1 hour		~1 hour	
Continuous Working Time	Low Speed	High Speed	Low Speed	High Speed	Low Speed	High Speed	Low Speed	High Speed
	> 140 minutes	> 110 minutes	> 140 minutes	> 110 minutes	> 180 minutes	> 120 minutes	> 180 minutes	> 120 minutes
Battery Cycle Life	1,000 Charge Cycles		1,000 Charge Cycles		1,000 Charge Cycles		1,000 Charge Cycles	
Flow Rate	Low Speed (open flow)	High Speed (dead head)	Low Speed (open flow)	High Speed (dead head)	Low Speed (open flow)	High Speed (dead head)	Low Speed (open flow)	High Speed (dead head)
	0.25 GPM	0.48 GPM	0.25 GPM	0.48 GPM	0.12 GPM	1.12 GPM	0.12 GPM	1.12 GPM
Liquid Output / Charge	Low Speed (open flow)	High Speed (dead head)	Low Speed (open flow)	High Speed (dead head)	Low Speed (open flow)	High Speed (dead head)	Low Speed (open flow)	High Speed (dead head)
	> 50 gallons	> 50 gallons	> 50 gallons	> 50 gallons	> 110 gallons	> 110 gallons	> 110 gallons	> 110 gallons
Spray Distance	> 25 Feet (8 Meters)		> 25 Feet (8 Meters)		> 30 Feet (10 Meters)		> 30 Feet (10 Meters)	
Gun / Wand Type	Pressure Washer Spray Gun with Viton™ Seal / Quick-Connect Stainless Steel Wand		Pressure Washer Spray Gun with Viton™ Seal / Quick-Connect Stainless Steel Wand		Pressure Washer Spray Gun with Viton™ Seal / Quick-Connect Stainless Steel Wand		Pressure Washer Spray Gun with Viton™ Seal / Quick-Connect Stainless Steel Wand	
Included Nozzles (QC = quick connect)	Adjustable QC, 25° Fan QC, 0° Pin Stream QC		Adjustable QC, 0° Pin Stream QC, 25° Fan TeeJet™ w/ QC Adaptor		Adjustable QC, 25° Fan QC, 0° Pin Stream QC		Adjustable QC, 25° Fan QC, 0° Pin Stream QC	
Sprayer Seal	Viton™		Viton™		Viton™		Viton™	
Hose Type	UV-Resistant Threaded Black Nylon PVC with Bend Relief (5 feet)		UV-Resistant Threaded Black Nylon PVC with Bend Relief (5 feet)		UV-Resistant Threaded Black Nylon PVC with Bend Relief (5 feet)		UV-Resistant Threaded Black Nylon PVC with Bend Relief (20 feet)	
Gross / Net Weight	9.3 / 7.3 pounds		14 / 12 pounds		16 / 14 pounds		21 / 16.5 pounds	
Packing Size	13.2" x 7.9" x 19.5"		14" x 9.5" x 21.7"		14" x 9.5" x 21.7"		15.75" x 10.25" x 31.7"	
Agency / Standards Approvals	UL / CE / RoHS		UL / CE / RoHS		UL / CE / RoHS		UL / CE / RoHS	



2021 COMPATIBILITY

ACCESSORIES & REPLACEMENT PARTS

*ALL PARTS ARE COMPATIBLE WITH FlowZone® SERIES 2 & 2V SPRAYERS UNLESS OTHERWISE NOTED



Model Number	FZAAEM	FZAAEN	FZAAEL	FZAAEP
Description	5.2Ah Battery	2.6Ah Battery	2.5A Charger	1A Charger
Compatible With	Typhoon 2.5™ (FZVAAK-2.5) / Monsoon 2.5™ (FZVABN-2.5)	Storm 2.5™ (FZVAAG-2.5) / Cyclone 2.5™ (FZVAAJ-2.5)	Typhoon 2.5™ (FZVAAK-2.5) / Monsoon 2.5™ (FZVABN-2.5)	Storm 2.5™ (FZVAAG-2.5) / Cyclone 2.5™ (FZVAAJ-2.5)



Model Number	FZAAGD	FZAAGE	FZAABC	FZAAAZ
Description	ComfortStraps™ (4 gallon)	ComfortStraps™ (2.5 gallon)	Heavy-Duty Trolley	Heavy-Duty Trolley w/ 20 ft. Extension Hose
Compatible With	Cyclone 2.5™ (FZVAAJ-2.5) / Typhoon 2.5™ (FZVAAK-2.5)	Storm 2.5™ (FZVAAG-2.5)	Cyclone 2.5™ (FZVAAJ-2.5) / Typhoon 2.5™ (FZVAAK-2.5)	Cyclone 2.5™ (FZVAAJ-2.5) / Typhoon 2.5™ (FZVAAK-2.5)



Model Number	FZRAFL	FZRAAV	FZAADA	FZRABV
Description	UV-Resistant Threaded PVC Hose w/ Bend Relief (5 ft.)	UV-Resistant PVC Replacement Hose w/ Bend Relief (20 ft.)	UV-Resistant PVC Extension Hose w/ Bend Relief (20 ft.)	Pressure Washer Spray Gun with Viton™ Seal
Compatible With	Storm 2.5™ (FZVAAG-2.5) / Cyclone 2.5™ (FZVAAJ-2.5) / Typhoon 2.5™ (FZVAAK-2.5)	Monsoon 2.5™ (FZVABN-2.5)	All Pro-Series Sprayers	All Pro-Series Sprayers



2021 COMPATIBILITY

ACCESSORIES & REPLACEMENT PARTS

*ALL PARTS ARE COMPATIBLE WITH FlowZone® SERIES 2 & 2V SPRAYERS UNLESS OTHERWISE NOTED



Model Number	FZRAAS	FZAAAR	FZAAAQ	FZAAAP	FZAAEW
Description	18" Stainless Steel Quick-Connect Wand	Quick-Connect Adjustable Nozzle	Quick-Connect 25° Fan Nozzle	Quick-Connect 0° Pin Stream Nozzle	Quick-Connect to 110° TeeJet™ Nozzle Adaptor
Compatible With	FZRABV	All Pro-Series Sprayers	All Pro-Series Sprayers	All Pro-Series Sprayers	All Pro-Series Sprayers



Model Number	FZAADL	FZAABD	FZAADY	FZAAFW	FZAADZ
Description	Quick-Connect to 11/16" Threaded Female Adaptor	110° Fan 11/16" Threaded Nozzle	Eco 110° Fan Nozzle (Yellow)	Eco 110° Fan Nozzle (Green)	Flat-Spray Nozzle
Compatible With	All Pro-Series Sprayers	FZAADL (required)	FZAAEW (required)	FZAAEW (required)	FZAAEW (required)



Model Number	FZAADX	FZAAEA	FZAAFM	FZAAFY	FZAACC
Description	Gran Angular Nozzle	4-Output Cone Nozzle	Dual-Head Fan Nozzle	Optima Foaming Nozzle	11/16" Threaded to GHT Hose Adaptor
Compatible With	FZAAEW (required)	FZAADL (required)	FZAADL (required)	FZAADL (required)	FZRAFL / FZRAAV / FZAADA



2021 COMPATIBILITY

ACCESSORIES & REPLACEMENT PARTS

*ALL PARTS ARE COMPATIBLE WITH FlowZone® SERIES 2 & 2V SPRAYERS UNLESS OTHERWISE NOTED



Model Number	FZAAHY	FZAADW	FZAADT	FZAADU	FZAADV
Description	Male 11/16" to Female M18 Adapter	16.4-ft. Telescopic Wand	27.5" Carbon Fiber Wand w/ Viton™ Seal	27.5" Carbon Fiber Wand w/ EPDM Seal	31.5" Carbon Fiber Wand w/ Viton™ Seal
Compatible With	FZRAFL / FZRAAV / FZAADA	FZRAFL / FZRAAV / FZAADA	FZRAFL / FZRAAV / FZAADA	FZRAFL / FZRAAV / FZAADA	FZRAFL / FZRAAV / FZAADA



Model Number	FZAAFZ	FZAAGA	FZAAGB	FZRAEH	FZRABW
Description	Two Nozzle Boom	Two Nozzle Extendable Boom	4 Nozzle Boom	Tank Lid	Tank Strainer
Compatible With	FZRAAS	FZRAAS	FZRAAS	All Pro-Series Sprayers	All Pro-Series Sprayers



Model Number	FZRABH	FZRAEJ	FZRAEK	FZRAEG	FZRAGU
Description	Top & Bottom Wand Holsters	Top Wand Holster	Bottom Wand Holster	Battery Cover	Replacement 4-Gallon Tank
Compatible With	All Pro-Series Sprayers	All Pro-Series Sprayers	All Pro-Series Sprayers	Cyclone 2.5™ (FZVAAJ-2.5) / Typhoon 2.5™ (FZVAAK-2.5)	Cyclone 2™ (FZSAAJ-2) / Cyclone 2V™ (FZVAAJ-2) / Cyclone 2.5™ (FZVAAJ-2.5) / Typhoon 2™ (FZSAAK-2) / Typhoon 2V™ (FZVAAK-2) / Typhoon 2.5™ (FZVAAK-2.5)



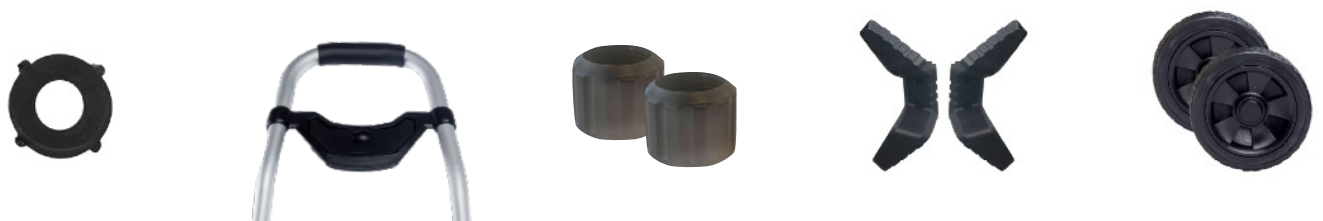
2021 COMPATIBILITY

ACCESSORIES & REPLACEMENT PARTS

*ALL PARTS ARE COMPATIBLE WITH FlowZone® SERIES 2 & 2V SPRAYERS UNLESS OTHERWISE NOTED



Model Number	FZRAGL	FZRACM	FZRAGK	FZRAGM	FZRACK	FZRACL
Description	Pump Inlet Filter	Pump Inlet Filter	Pump Inlet Filter	Pump Inlet Filter	Tank Lid Gasket (Viton™)	Pump Inlet Gasket (Viton™)
Compatible With	Storm 2™ (FZSAAG-2P) / Storm 2V™ (FZVAAG-2) / Storm 2.5™ (FZVAAG-2.5)	Cyclone 2™ (FZSAAJ-2) / Cyclone 2V™ (FZVAAJ-2) / Cyclone 2.5™ (FZVAAJ-2.5)	Typhoon 2™ (FZSAAK-2) / Typhoon 2V™ (FZVAAK-2) / Typhoon 2.5™ (FZVAAK-2.5)	Monsoon 2™ (FZSABN-2) / Monsoon 2V™ (FZVABN-2) / Monsoon 2.5™ (FZVABN-2.5)	FZRAEH	All Pro-Series Sprayers



Model Number	FZRAFP	FZRADE	FZRAHM	FZRADF	FZRAFN
Description	Hose Gasket (Viton™)	Handle w/ Storage Compartment	Handle Locking Nuts	Hose Brackets	Wheels & Cotter Pins
Compatible With	FZRAFL / FZRAAV / FZAADA	Monsoon 2.5™ (FZVABN-2.5)	Monsoon 2.5™ (FZVABN-2.5)	Monsoon 2.5™ (FZVABN-2.5)	Monsoon 2.5™ (FZVABN-2.5)



Model Number	FZRAHP	FZRADN	FZRAER	FZRAEZ	FZRAFO
Description	Drain Plug	Standard / Dual Pressure Pump Assembly (RL)	Standard / Variable Pressure Pump Assembly (RL)	Standard / Dual Pressure Pump Assembly (LR)	Standard / Variable Pressure Pump Assembly (LR)
Compatible With	Monsoon 2.5™ (FZVABN-2.5)	Storm 2™ (FZSAAG-2P)	Storm 2V™ (FZVAAG) / Storm 2.5™ (FZVAAG-2.5)	Cyclone 2™ (FZSAAJ-2)	Cyclone 2V™ (FZVAAJ-2) / Cyclone 2.5™ (FZVAAJ-2.5)



2021 COMPATIBILITY

ACCESSORIES & REPLACEMENT PARTS

*ALL PARTS ARE COMPATIBLE WITH FlowZone® SERIES 2 & 2V SPRAYERS UNLESS OTHERWISE NOTED



Model Number	FZRAEX	FZRAES	FZRADR	FZRAEY	FZRAFC
Description	High / Dual Pressure Pump Assembly (LR)	High / Variable Pressure Pump Assembly (LR)	High / Dual Pressure Pump Assembly (RL)	High / Variable Pressure Pump Assembly (RL)	Standard Pressure Pump (RL)
Compatible With	Typhoon 2™ (FZSAAK-2)	Typhoon 2V™ (FZVAAK-2) / Typhoon 2.5™ (FZVAAK-2.5)	Monsoon 2™ (FZSABN-2)	Monsoon 2V™ (FZVABN-2) / Monsoon 2.5™ (FZVABN-2.5)	Storm 2™ (FZSAAG-2P) / Storm 2V™ (FZVAAG-2) / Storm 2.5™ (FZVAAG-2.5)



Model Number	FZRAFD	FZRAFE	FZRAFF	FZRAFG	FZRAFI
Description	Standard Pressure Pump (LR)	High Pressure Pump (LR)	High Pressure Pump (RL)	Standard / Dual Pressure Pump Circuit Board	Standard / Variable Pressure Pump Circuit Board
Compatible With	Cyclone 2™ (FZSAAJ-2) / Cyclone 2V™ (FZVAAJ-2) / Cyclone 2.5™ (FZVAAJ-2.5)	Typhoon 2™ (FZSAAK-2) / Typhoon 2V™ (FZVAAK-2) / Typhoon 2.5™ (FZVAAK-2.5)	Monsoon 2™ (FZSABN-2) / Monsoon 2V™ (FZVABN-2) / Monsoon 2.5™ (FZVABN-2.5)	Storm 2™ (FZSAAG-2P) / Cyclone 2™ (FZSAAJ-2)	Storm 2V™ (FZVAAJ-2) / Storm 2.5™ (FZVAAJ-2.5) / Cyclone 2V™ (FZVAAJ-2) / Cyclone 2.5™ (FZVAAJ-2.5)



Model Number	FZRAFH	FZRAFJ	FZRAGT	FZRAFT
Description	High / Dual Pressure Pump Circuit Board	High / Variable Pressure Pump Circuit Board	Waterproof Pump Microswitch	Pump Microswitch
Compatible With	Typhoon 2™ (FZSAAK-2) / Monsoon 2™ (FZSABN-2)	Typhoon 2V™ (FZVAAK-2) / Typhoon 2.5™ (FZVAAK-2.5) / Monsoon 2V™ (FZVABN-2) / Monsoon 2.5™ (FZVABN-2.5)	FZRAFC / FZRAFD / FZRAFE / FZRAFF	Series 2 & 2V Pumps Only