



MULTI-DOSE BAIT GUN USER'S MANUAL

Safety Precautions

- Always wear personal protection equipment required by the insecticide label.
- Keep stopper and caps on all bait tubes while not in use and while transporting the bait gun.
- Always follow label directions on gel bait insecticides for use and disposal of empty syringes.

Suggested Uses

- For the application of paste or gel formulations of insecticides
- Setting 1-7 on the bait gun are calibrated for syringes filled with paste or gel formulations.

Before Starting

- Be sure the plunger rod moves back and forth smoothly; if not, place a small amount of oil on the rod.
- Push the rod release lever forward to move the plunger to the base of the gun.

Operating Instructions

Attach Syringe

- Retract the plunger to the base of the gun
- Push the syringe against the large gasket between the locking tabs, and twist to the right.

Select Setting

- Select the setting (1-6) by pulling the adjustment knob out and turning to the right or left.
- Align the number with the triangle point on the side of the gun.



Plunger Rod Maintenance

In dry conditions, such as the hot or heated cab of a vehicle, the oil used to lubricate the gun may become dry.

The absence of oil on the plunger rod can result in it sticking and preventing the gun from delivering bait.



Operation



Setting #4 = 1/4 gram



Setting #6 = 1/2 gram



Care and Maintenance

- When not in use, store the gun so that the plunger rod will not be damaged or bent.
- Oil the plunger rod at the back of the gun on a regular basis.

Damaged Plunger Rod

- To replace the rod, do not take the gun apart.
- Unscrew and remove the end of the plunger rod, then lightly press the release knob (on the top of the gun) and pull the rod out of the back of the gun
- Insert new rod (twist slightly) carefully through back of the gun, then attach the tip of the rod.

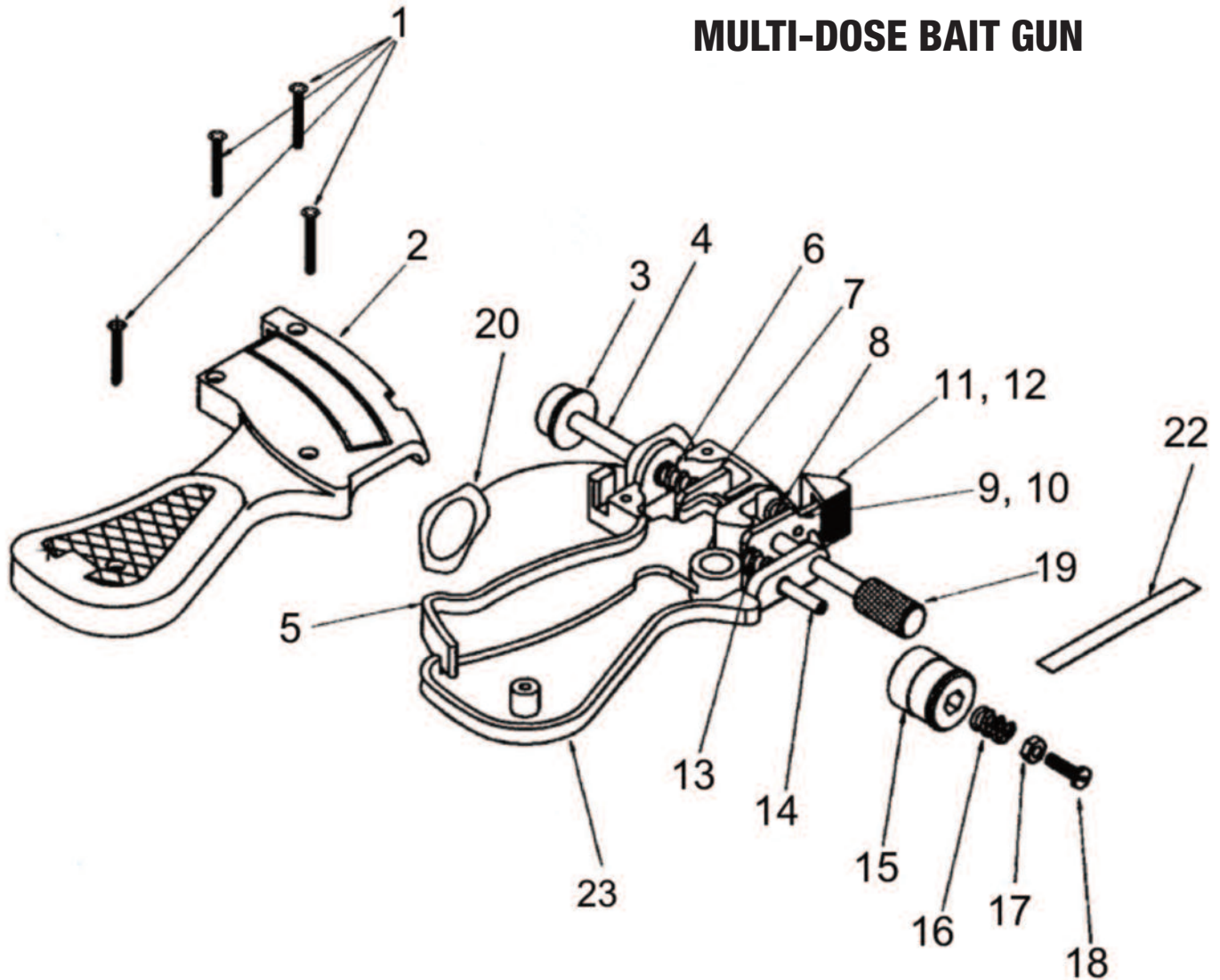
Trouble Shooting

Problem: Syringe does not hold securely to gun
Solution: • Check for o-ring, replace if lost or damaged

Problem: No bait is delivered with trigger pull
Solution: • Lightly oil the plunger rod
• Check the setting it should not be a 0
• Check the syringe, the bait may be dry

Problem: Bait continues to drip after trigger pull
Solution: • Bait formation may be too "wet," select a lower setting on adjustment knob

MULTI-DOSE BAIT GUN



ITEM	NUMBER	DESCRIPTION
1	24020129	Screw, self-tapping
2	24020103	Body left
3	24020112	Plunger, syringe
4	24020111	Plunger rod
5	24020105	Trigger
6	24020125	Spring, front lock plate
7	24020164	Plate front locking
8	24020124	Spring, upper rear lock
9	24020165	Plate rear locking
10	24020152	Screw, #8 32 x 1/8"
11	24020107	Knob, rod release
12	24020147	Screw, #8 32 x 1/8"
13	24020127	Spring, lower rear lock
14	24020121	Screw, dose adjusting
15	24020116	Dose adj. knob assembly
16	24020126	Spring, dose adj. knob
17	24020122	Nut, modified
18	24020128	Screw
19	24020113	Knob, plunger
20	22067743	Washer, O-ring
22	24020119	Label, dose adjusting
23	24020101	Body right

B&G Help Line
800-544-8811



135 REGION SOUTH DRIVE • JACKSON, GA 30233
 Toll Free 800-544-8811 • Phone 678-688-5601
 www.bgequip.com • Fax 678-688-5633