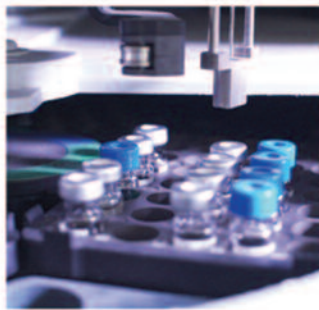
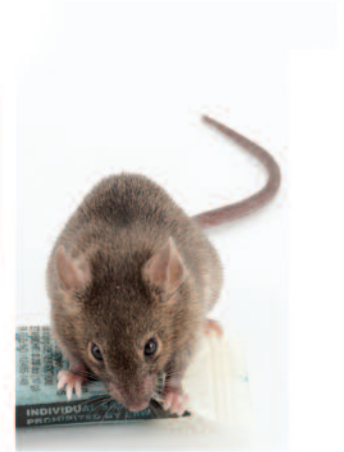




# PRODUCT GUIDE



**THE WORLD  
LEADER IN  
RODENT  
CONTROL  
TECHNOLOGY®**



# SUPERIOR PRODUCTS FROM THE WORLD LEADER IN RODENT CONTROL



As the world leader in rodent control technology, Bell Laboratories continues to provide leadership and stewardship for the rodent control segment of the pest control industry. Our focus is on quality, functionality and innovation.

Whether it is the development and production of innovative rodent control products, being at the forefront of regulatory issues, or developing new revenue opportunities for PMPs (such as providing rodent service for certified organic facilities using Terad<sub>3</sub>Ag or residential baiting with the T1 Mouse), Bell is committed to supporting the pest control industry.

## PROTECTA TAMPER-RESISTANT BAIT STATIONS

From the toughest to most discreet baiting requirements, Bell offers PMPs a choice of versatile, tamper-resistant bait stations and anchoring systems to fit any situation.

## UNIQUE RODENTICIDE BAIT FORMULATIONS

Bell Laboratories' complete line of rodenticides represents the widest range of rodent baits available anywhere. Bell's rodenticides contain only the high quality inert ingredients for maximum results. Bell's overall palatability and efficacy are proven in both laboratory and field settings.



## TRAPPER GLUE AND MECHANICAL TRAPS

Bell has applied its vast knowledge of rodent behavior and engineering savvy into the development of an array of mechanical and adhesive trapping alternatives. Bell's glue formulations are the result of substantial research and testing to determine the ideal combination of immediate grip and stretchable hold, the two factors needed for the highest possible capture rate.



## TALPIRID MOLE BAIT AND MOLE TRAP

TALPIRID Mole Bait is a one-of-a-kind product that was developed after years of groundbreaking research. It is the first mole bait of its type designed, developed and scientifically proven to kill moles.

TALPIRID Mole Trap incorporates the latest in mole trap technology. Built to withstand any soil type, it is the ideal complement to a complete TALPIRID program.



## MANUFACTURING FACILITY

Bell is a vertically integrated manufacturing company. All of Bell's products are designed, tested and manufactured in its modern facility in Madison, Wis., which houses its manufacturing operation, offices, and biological and chemical testing laboratories.

## ENVIRONMENTAL STEWARDSHIP

Bell continues to work with conservation groups and government agencies around the world to rid ecosystems of invasive species and restore the balance of nature.



# TABLE OF CONTENTS

- 2-3** Reference Guide to Bell Rodenticide Baits
- 4-5** Reference Guide to Bell Stations, Traps and Accessories

## BAITS

- 7** CONTRAC
- 7** CONTRAC with Lumitrack
- 8** DETEX with Lumitrack
- 8** FINAL
- 9** PCQ PRO
- 9** DITRAC
- 10** FASTRAC
- 10** FORMUS
- 11** TERAD<sub>3</sub>
- 11** TERAD<sub>3</sub> AG
- 12** TALPIRID Mole Bait
- 12** ZP
- 13** LIQUA-TOX
- 13** T1 Mouse
- 13** T1 Rat








## TRAPS & GLUE

- 19** 24/7
- 19** PEST MONITOR
- 20** T-REX
- 20** MINI-REX
- 20** PROVOKE Rat & Mouse
- 21** RODENT BAITERS
- 21** TALPIRID Mole Trap
- 22** GLUE BOARDS
- 22** MAX/MAX Free
- 23** LTD
- 23** MONITOR & INSECT






## STATIONS

- 14** EVO Express
- 14** EVO Ambush
- 14** EVO Circuit
- 15** EVO Mouse
- 15** EVO Landscape
- 16** PROTECTA
- 16** LP
- 17** MOUSE
- 17** KEYLESS
- 17** RTU
- 18** SIDEKICK
- 18** LOAD-N-LOCK



	<b>DETEX<sup>®</sup></b> WITH LUMITRACK	<b>CONTRAC<sup>®</sup></b>	<b>CONTRAC<sup>®</sup></b> WITH LUMITRACK	<b>DITRAC<sup>®</sup></b>	<b>DITRAC<sup>®</sup></b> TRACKING POWDER	<b>FASTRAC<sup>®</sup></b>	<b>FINAL<sup>®</sup></b>
<b>BAIT FORM</b>	 Blox; Soft Bait	 Pelleted; Meal; Blox; Super-Size Blox; Soft Bait	 Blox	 Blox; Cake	 Tracking Powder	 Pelleted; Blox	 Soft Bait; Pelleted; Blox
<b>ACTIVE INGREDIENT</b>	None	Bromadiolone (Single-feeding anticoagulant)	Bromadiolone (Single-feeding anticoagulant)	Diphacinone (Anticoagulant)	Diphacinone (Anticoagulant)	Bromethalin (Acute)	Brodifacoum (Single-feeding anticoagulant)
<b>CONTROLS</b>	Monitors rodent activity	Norway & roof rats, house mice, deer mouse, cotton mouse, white footed mouse, meadow vole, & non-com- musal rodents listed on label	Norway & roof rats, house mice, meadow vole, & non- commusal rodents listed on label	Norway & roof rats, house mice, meadow vole, & non- commusal rodents listed on label	Norway & roof rats; house mice	Norway & roof rats, house mice, meadow vole, & non- commusal rodents listed on label	Norway & roof rats, house mice, meadow vole, & non-com- musal rodents listed on label
<b>SITE</b>	Indoors/ outdoors	Indoors/outdoors; Wet & dry areas (Blox)	Indoors/ outdoors	Indoors/outdoors; Wet & dry areas	Indoors/ outdoors	Indoors/ outdoors	Indoors/ outdoors
<b>PRODUCT FEATURES</b>	<ul style="list-style-type: none"> <li>Lumitrack incorporated; makes feces glow under UV light</li> <li>Non-toxic for monitoring rodent activity</li> </ul>	<ul style="list-style-type: none"> <li>Kills warfarin-resistant Norway rats</li> <li>Single-feed anticoagulant</li> <li>Proven rodent acceptance</li> </ul> <p><b>USDA approved*</b></p>	<ul style="list-style-type: none"> <li>Lumitrack incorporated; makes feces glow under UV light for identification &amp; tracking purposes</li> <li>Single-feed anticoagulant</li> </ul>	<ul style="list-style-type: none"> <li>Mold &amp; moisture resistant</li> <li>Proven rodent acceptance</li> <li>Unique gnawing edges</li> </ul>	<ul style="list-style-type: none"> <li>Restricted use product</li> <li>Carrier adheres to rodents' fur</li> <li>Rodents consume when grooming</li> </ul>	<ul style="list-style-type: none"> <li>Knockdown power</li> <li>Kills rats and mice in 2 or more days after consuming a toxic dose</li> </ul>	<ul style="list-style-type: none"> <li>Contains the powerful active ingredient Brodifacoum</li> <li>Designed to control tough to control mouse populations</li> </ul>
<b>USES</b>	<ul style="list-style-type: none"> <li>Monitoring bait</li> <li>Maintenance</li> </ul>	<ul style="list-style-type: none"> <li>All baiting situations – wet or dry (Blox)</li> <li>Maintenance</li> <li>Clean out</li> </ul>	<ul style="list-style-type: none"> <li>Monitoring</li> <li>Tracking</li> <li>Clean out</li> <li>Maintenance</li> </ul>	<ul style="list-style-type: none"> <li>All baiting situations – wet, damp &amp; dry (Blox &amp; Cake)</li> <li>Perimeter baiting</li> </ul>	<ul style="list-style-type: none"> <li>Perimeter burrow application</li> <li>Indoor use in secluded areas</li> </ul>	<ul style="list-style-type: none"> <li>All baiting situations – wet (Blox) or dry</li> <li>Faster clean out than with anticoagulant baits</li> </ul>	<ul style="list-style-type: none"> <li>Clean out</li> <li>Maintenance</li> </ul>

# TO BELL RODENTICIDE BAITS

Formus	LIQUA-TOX®	T1 MOUSE T1 RAT	P.C.Q. PRO	Terad <sub>3</sub>	Terad <sub>3</sub> Ag	ZP® TRACKING POWDER	ZP® RODENT BAIT AG
							
Blox	Liquid	Blox in a disposable station	Pelleted	Blox	Blox	Tracking Powder	Pelleted; Oats
Brodifacoum (Single-feeding anticoagulant)	Sodium Salt of Diphacinone (Anticoagulant)	Bromethalin (Acute)	Diphacinone (Anticoagulant)	Vitamin D <sub>3</sub> , Cholecalciferol (Acute)	Vitamin D <sub>3</sub> , Cholecalciferol (Acute)	Zinc Phosphide (Acute)	Zinc Phosphide (Acute)
Norway & roof rats, house mice, meadow vole, & non-commensal rodents listed on label	Norway & roof rats; house mice	Norway & roof rats; house mice	Norway & roof rats; house mice; meadow voles	Norway & roof rats; house mice	Norway & roof rats; house mice	House mice	Rats, mice, voles, ground squirrels, prairie dogs, and gophers
Indoors/ outdoors	Indoors	Indoors/ outdoors	Outdoors	Indoors/ outdoors	Indoors/ outdoors	Indoors	Outdoors
<ul style="list-style-type: none"> <li>• Designed to control mouse populations</li> <li>• Contains the powerful active ingredient Brodifacoum</li> </ul>	<ul style="list-style-type: none"> <li>• Soluble in water</li> <li>• 1.68 oz. liquid concentrate makes 1 qt. liquid bait</li> </ul>	<ul style="list-style-type: none"> <li>• Proven tamper-resistant for kids &amp; dogs</li> <li>• Kills rats and mice in 2 or more days after consuming a toxic dose</li> </ul>	<ul style="list-style-type: none"> <li>• Restricted use product</li> <li>• Burrow bait for meadow voles, control California ground squirrels &amp; more</li> </ul>	<ul style="list-style-type: none"> <li>• For Structural Control</li> <li>• Mold &amp; moisture resistant</li> </ul>	<ul style="list-style-type: none"> <li>• OMRI Listed</li> <li>• For Organic Production</li> <li>• Mold and moisture resistant</li> </ul>	<ul style="list-style-type: none"> <li>• Restricted use product</li> <li>• Use where solid baits aren't practical</li> <li>• Rodents consume when grooming</li> </ul>	<ul style="list-style-type: none"> <li>• Restricted use product</li> <li>• For field and structural uses</li> </ul>
<ul style="list-style-type: none"> <li>• Clean out</li> <li>• Maintenance</li> </ul>	<ul style="list-style-type: none"> <li>• Maintenance</li> <li>• Effective where water is scarce or rodent has extensive food supply</li> </ul>	<ul style="list-style-type: none"> <li>• Residential baiting</li> </ul>	<ul style="list-style-type: none"> <li>• Burrow bait for meadow voles, control California ground squirrels &amp; more</li> <li>• Restricted use product</li> </ul>	<ul style="list-style-type: none"> <li>• Maintenance</li> <li>• Residential</li> <li>• Commercial</li> </ul>	<ul style="list-style-type: none"> <li>• Organic Production Facilities</li> <li>• Food Processing</li> <li>• Animal Production</li> </ul>	<ul style="list-style-type: none"> <li>• Clean out</li> <li>• Maintenance</li> </ul>	<ul style="list-style-type: none"> <li>• Agriculture</li> <li>• Lawns, ornamentals</li> <li>• Parks/nurseries</li> <li>• Orchards/groves</li> <li>• Sugar cane fields</li> </ul>









PRODUCT	PURPOSE	FEATURES
 <p><b>PROTECTA® EVO® CIRCUIT™</b></p>	Ideal for sensitive accounts, the Circuit includes side connectors that, when attached, make the station appear as an electrical box.	<ul style="list-style-type: none"> <li>• Side connectors make station simulate an electrical box</li> <li>• Single lock and removable tray for fast and easy servicing</li> <li>• Can be used horizontally or vertically</li> </ul>
 <p><b>PROTECTA® EVO® AMBUSH™</b></p>	Low-profile station that accommodates the T-Rex rat snap trap for times when trapping is a necessary part of the IPM program.	<ul style="list-style-type: none"> <li>• Single lock and removable tray for fast and easy servicing</li> <li>• Compatible with the Sidekick Load-N-Lock system</li> </ul>
 <p><b>PROTECTA® EVO® MOUSE™</b></p>	Versatile mouse station designed with a single locking mechanism to provide quick servicing, combined with increased bait storage capabilities.	<ul style="list-style-type: none"> <li>• Fits in corners and tight spaces</li> <li>• Holds 2 – 1 oz. BLOX</li> <li>• Bait rods included for soft bait</li> <li>• Quick servicing features</li> </ul>
 <p><b>PROTECTA® EVO® LANDSCAPE™</b></p>	Tamper-resistant rat station designed to blend in with outdoor landscape.	<ul style="list-style-type: none"> <li>• Tamper-resistant, opens side-ways with EVO key</li> <li>• Full-size insert tray available</li> <li>• Holds 8 – 1 oz. BLOX and a T-Rex rat trap</li> </ul>
 <p><b>PROTECTA® EVO® EXPRESS™</b></p>	Tamper-resistant rat station comes pre-installed with concrete weight and includes a single lock mechanism and removable tray for simple & speedy servicing.	<ul style="list-style-type: none"> <li>• Securely and professionally anchors bait station with internal weight</li> <li>• Versatile; can hold 2 T-Rex rat traps, 2 Mini-Rex mouse traps or 8 - 1 oz. BLOX</li> <li>• Side-open with single lock</li> </ul>
 <p><b>PROTECTA® LP</b></p>	Tamper-resistant rat station designed for inside and outside buildings.	<ul style="list-style-type: none"> <li>• Fits along walls &amp; corners</li> <li>• Horizontal &amp; vertical securing rods</li> <li>• Available in two colors</li> </ul>
 <p><b>PROTECTA® SIDEKICK™</b></p>	Economical way to upgrade from using non-tamper-resistant bait stations to the security and high quality of a tamper-resistant bait station.	<ul style="list-style-type: none"> <li>• Tamper-resistant, opens side-ways with metal 2-prong key</li> <li>• Holds 8 – 1 oz. BLOX and a T-Rex rat trap</li> <li>• Integrated service card slot</li> </ul>
 <p><b>PROTECTA® LOAD-N-LOCK™</b></p>	Securely anchors bait stations and provides professional appearance compared to patio blocks.	<ul style="list-style-type: none"> <li>• Made of heavy duty molded plastic</li> <li>• Quick servicing features</li> <li>• Available for Sidekick and Ambush</li> </ul>
 <p><b>PROTECTA® BAIT STATION</b></p>	Use outdoors and inside commercial and industrial buildings.	<ul style="list-style-type: none"> <li>• Tamper-resistant</li> <li>• Made of heavy-duty molded plastic</li> <li>• Horizontal and vertical bait securing rods</li> </ul>

PRODUCT	
 <p><b>PROTECTA® MOUSE</b></p>	
 <p><b>PROTECTA® KEYLESS</b></p>	
 <p><b>PROTECTA® RTU</b></p>	
 <p><b>TRAPPER® T-REX</b></p>	
 <p><b>TRAPPER® MINI-REX</b></p>	
 <p><b>TRAPPER® 24/7</b></p>	
 <p><b>RODENT BAITERS</b></p>	
 <p><b>TALPIRID® MOLE TRAP</b></p>	



# BELL STATIONS, TRAPS & ACCESSORIES

PURPOSE	FEATURES
"3-in-1" side-opening device works as a bait station, monitor and trap.	<ul style="list-style-type: none"> <li>Tamper-resistant, opens side-ways with metal, 2-prong key</li> <li>Holds BLOX and TRAPPER Mini-Rex</li> </ul>
Tamper-resistant, keyless mouse station. Available in black for easier monitoring.	<ul style="list-style-type: none"> <li>No key required</li> <li>Three separate entry points/feeding stations</li> <li>Holds two BLOX securely</li> </ul>
Tamper-resistant mouse station with patented design features.	<ul style="list-style-type: none"> <li>Designed to hold Bell's extruded BLOX baits</li> <li>Reusable</li> <li>Fits in corners or against walls</li> </ul>
Powerful rat snap trap sets by hand or foot. Includes patented interlocking teeth.	<ul style="list-style-type: none"> <li>Use alone or in PROTECTA bait stations</li> <li>Removable bait cup makes servicing easy</li> </ul>
Powerful mouse snap trap. Includes patented interlocking teeth.	<ul style="list-style-type: none"> <li>Use alone or in PROTECTA bait stations</li> <li>Removable bait cup</li> <li>Excellent trigger sensitivity</li> </ul>
Sleek, non-winding multiple catch mouse trap.	<ul style="list-style-type: none"> <li>Monitors/traps mice &amp; insects</li> <li>Horizontal sliding lid</li> <li>Durable plastic won't rust</li> <li>Fits under pallets and in tight spaces</li> </ul>
Economical way to place bait where tamper resistance is not required.	<ul style="list-style-type: none"> <li>Holds liquid, dry bait or tracking powder</li> <li>Two sizes available for rats and mice</li> </ul>
Superior designed scissor mole trap.	<ul style="list-style-type: none"> <li>Easy to set and service</li> <li>Setting is "hands-free"</li> <li>Can be reused</li> </ul>

PRODUCT	PURPOSE	FEATURES
 <p><b>HIDDEN KILL™</b></p>	A better, more professional way to trap mice.	<ul style="list-style-type: none"> <li>Quick, no mess capture &amp; kill</li> <li>Exceptional value</li> <li>Stealthy design</li> </ul>
 <p><b>PROVOKE®</b></p>	Trap Gels specifically formulated for rats and mice.	<ul style="list-style-type: none"> <li>Works with any trap</li> <li>Non-toxic and hypoallergenic</li> <li>Won't stain clothing or fabrics</li> </ul>
 <p><b>TRAPPER® GLUE BOARDS</b></p>	Captures rats and mice, available in two sizes, non-toxic	<ul style="list-style-type: none"> <li>Low profile tray contains soft yet tenacious glue</li> <li>Protective Tunnel available</li> </ul>
 <p><b>TRAPPER® PEST MONITOR</b></p>	2-piece pest monitor designed for mice and insects.	<ul style="list-style-type: none"> <li>Holds a TRAPPER MC glue trap for easy monitoring of mice or insects</li> <li>Discrete</li> </ul>
 <p><b>TRAPPER® MAX</b></p>	Scented glue trap that captures mice, roaches and other insects.	<ul style="list-style-type: none"> <li>Non-toxic, disposable glue trap</li> <li>Powerful adhesive coated on cardboard</li> </ul>
 <p><b>TRAPPER® MAX FREE</b></p>	Non-scented, hypoallergenic glue trap for sensitive accounts.	<ul style="list-style-type: none"> <li>Non-toxic, disposable glue trap</li> <li>Powerful adhesive coated on cardboard</li> </ul>
 <p><b>TRAPPER® LTD</b></p>	Captures mice, roaches and other insects.	<ul style="list-style-type: none"> <li>Non-toxic, disposable glue trap</li> <li>Can be used flat or folded for protection</li> </ul>
 <p><b>TRAPPER® MONITOR &amp; INSECT TRAP</b></p>	Captures and monitors roaches and other insects.	<ul style="list-style-type: none"> <li>Can be used as a single trap or broken into three traps</li> <li>Non-toxic</li> <li>Available with roach attractant tablets</li> </ul>

# CONTRAC<sup>®</sup> SOFT BAIT

**PROVEN  
PERFORMANCE  
IN ANY SETTING**



**BELL'S MOST EXTENSIVELY RESEARCHED  
AND TESTED RODENTICIDE EVER**

- ▶ Comprehensive field testing:  
Urban & Rural, Commercial & Residential
- ▶ Proven lab testing
- ▶ Manufacturing process ensures contact with sachet paper, maximizing bait acceptance
- ▶ Outstanding preservative package

**WON'T FREEZE, MOLD OR MELT**



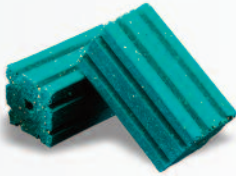
# CONTRAC®

## Proven Rodent Acceptance

- ▶ Contains the single-feeding anticoagulant Bromadiolone
- ▶ Formulated with an optimal blend of ingredients and low wax content for high palatability and weatherability
- ▶ Ideal choice for all-around control



**PACKAGING:**  
4 lb. & 18 lb. plastic pails,  
1 lb. pouch –  
EPA REG. NO. 12455-79



**PACKAGING:**  
40 per case –  
EPA REG. NO. 12455-82



**PACKAGING:**  
25 lb. plastic pail –  
EPA REG. NO. 12455-69  
174 x 1.5 oz. place pacs –  
EPA REG. NO. 12455-76  
291 x 25 gm. place pacs –  
EPA REG. NO. 12455-86



**PACKAGING:**  
25 lb. plastic pail –  
EPA REG. NO. 12455-36  
174 x 1.5 oz. place pacs –  
EPA REG. NO. 12455-75



**PACKAGING:**  
16 lb. plastic pail –  
EPA REG. NO. 12455-146



## BLOX®

PRODUCT	CODE	1 oz. BLOX DIMENSIONS (in)
4 lb. Pail x 4/case	CB4047	1 3/4 x 1 x 1
18 lb. Plastic Pail	CB4051	1 3/4 x 1 x 1
1 lb. City Pack Bag	CB1616	1 3/4 x 1 x 1

## SUPER BLOX®

PRODUCT	CODE	8 oz. BLOX DIMENSIONS (in)
40 x 8 oz. Ctn.	CB4040	3 3/4 x 1 7/8 x 1 7/8

## PELLETS

PRODUCT	CODE	PLACE PAC DIMENSIONS (in)
25 lb. Plastic Pail	CP4082	N/A
174 x 1.5 oz. Ctn.	CP1715	4 7/8 x 3 x 5/8
291 x 25 gm. Ctn.	CP2925	4 7/8 x 2 3/16 x 5/8

## MEAL

PRODUCT	CODE	PLACE PAC DIMENSIONS (in)
25 lb. Plastic Pail	CM4058	N/A
174 x 1.5 oz. Ctn.	CM1715	4 7/8 x 3 x 5/8

## SOFT BAIT

PRODUCT	CODE	SACHET DIMENSIONS (in)
16 lb. Plastic Pail	CS1016	2 1/2 x 1 3/8 x 1/4

# CONTRAC®

WITH LUMITRACK  
PATENT PENDING

## Identify, Track & Eliminate Rodents

- ▶ Contains the single-feeding anticoagulant Bromadiolone
- ▶ Lumitrack makes rodent droppings illuminate under black or UV light for easy detection
- ▶ Aids in the tracking of entry points, pathways and nesting areas to improve your baiting strategy and strengthen your IPM program while controlling the rodent population in the process



**PACKAGING:**  
4 lb. & 18 lb. plastic pails –  
EPA REG. NO. 12455-133



## BLOX®

PRODUCT	CODE	1 oz. Blox DIMENSION (in)
4 lb. Pail x 4/case	CL4040	1 3/4 x 1 x 1
18 lb. Plastic Pail	CL1018	1 3/4 x 1 x 1

# DETEX<sup>®</sup>

WITH LUMITRACK<sup>®</sup>  
PATENT PENDING



## Non-Toxic Monitoring & Tracking Bait

- ▶ Contains no active ingredient
- ▶ Lumitrack makes rodent droppings illuminate under black or UV light for easy detection
- ▶ Aids in the tracking of entry points, pathways and nesting areas to improve your baiting strategy and strengthen your IPM program



**PACKAGING:**  
9 lb. plastic pail

**PACKAGING:**  
242 x 15gm. sachets

### BLOX<sup>®</sup>

PRODUCT	CODE	20 gm BLOX DIMENSIONS (in)
9 lb. Pail x 2/case	993000	1 7/8 x 1 x 1

### SOFT BAIT

PRODUCT	CODE	SOFT BAIT DIMENSIONS (in)
8 lb. Plastic Pail	DS1008	2 x 3

# FINAL<sup>®</sup>

## Powerful Single-Feed Anticoagulant Bait

- ▶ Contains the strong single-feeding anticoagulant Brodifacoum at 50 ppm for BLOX<sup>®</sup> & Pellets and 25 ppm for Soft Bait
- ▶ Designed for tough-to-control mouse populations
- ▶ Final Soft Bait with Lumitrack aids in the identification, tracking and elimination of rodents



**PACKAGING:**  
4 lb. & 18 lb. plastic pails  
EPA REG. NO. 12455-89

**PACKAGING:**  
291 x 25 gm. place pacs –  
EPA REG. NO. 12455-91

**PACKAGING:**  
484 x 15 gm. sachets –  
EPA REG. NO. 12455-139

### BLOX<sup>®</sup>

PRODUCT	CODE	20 gm. BLOX DIMENSIONS (in)
4 lb. Pail x 4/case	FB4040	1 3/4 x 1 x 3/4
18 lb. Plastic Pail	FB1018	1 3/4 x 1 x 3/4

### PELLETS

PRODUCT	CODE	PLACE PAC DIMENSIONS (in)
291 x 25 gm. Ctn.	FP2925	5 x 2 1/4 x 1/2

### SOFT BAIT with LUMITRACK<sup>®</sup>

PRODUCT	CODE	SOFT BAIT DIMENSIONS (in)
16 lb. Plastic Pail	FS1000	2 x 3

# P.C.Q.<sup>®</sup> PRO

## Burrow Bait for Voles & More

*Restricted Use Product*

- ▶ MEADOW & PINE VOLES: Approved for use in industrial, commercial & residential areas including homes, lawns, golf courses and more. Burrow Baiting & Ground Broadcast Baiting applications allowed, as listed on the label. Expanded sites when used with a bait station
- ▶ CALIFORNIA GROUND SQUIRRELS: Approved for use in Bait stations or spot baiting application in industrial, commercial and residential areas, including homes, lawns and more
- ▶ Approved for use against Norway Rats, Roof Rats and House Mice
- ▶ Contains Diphacinone, a proven first-generation anticoagulant active ingredient



**PACKAGING:**  
12 lb. pail and 50 lb. bulk bag  
EPA REG. NO. 12455-136  
*Not for sale in California or Idaho.*

## PELLETS

*Restricted Use Product*

	PRODUCT	CODE	DIMENSIONS (in)
▶	12 lb. Plastic Pail	PQ1012	N/A
	50 lb. Bulk Bag	PQ1050	N/A

# DITRAC<sup>®</sup>

## Economical Maintenance Bait

- ▶ Contains the multiple-feeding anticoagulant Diphacinone
- ▶ A better choice when non-targets are a concern
- ▶ The antidote is Vitamin K<sub>1</sub> treatment
- ▶ Excellent value for both indoor and outdoor applications



**PACKAGING:**  
4 lb. & 18 lb. plastic pails –  
EPA REG. NO. 12455-80



**PACKAGING:**  
16 per case –  
EPA REG. NO. 12455-5



**PACKAGING: BULK**  
6 lb. & 25 lb. plastic pails –  
EPA REG. NO. 12455-56

## BLOX<sup>®</sup>

	PRODUCT	CODE	1 oz. BLOX DIMENSIONS (in)
▶	4 lb. Pail x 4/case	DI4021	1 3/4 x 1 x 1
	18 lb. Plastic Pail	DI4024	1 3/4 x 1 x 1

## CAKE

	PRODUCT	CODE	1 lb. CAKE DIMENSIONS (in)
▶	16 x 1 lb. Ctn.	DC1601	6 1/4 x 4 1/8 x 1

## TRACKING POWDER

*Restricted Use Product*

	PRODUCT	CODE	DIMENSIONS (in)
▶	6 lb. Pail x 4/case	DI5066	N/A
	25 lb. Plastic Pail	DI5067	N/A



# FASTRAC®

## An acute non-anticoagulant for proven control of rats and mice

- ▶ Made with Bromethalin, an acute active
- ▶ Kills rats and mice in two or more days after consuming a toxic dose
- ▶ Formula provides improved palatability, weatherability and a higher melting point



**PACKAGING:**  
4 lb. plastic pail –  
EPA REG. NO. 12455-95

### BLOX®

PRODUCT	CODE	15 gm. BLOX DIMENSIONS (in)
4 lb. Pail x 2/case	XB2024	1 3/4 x 3/4 x 5/8



**PACKAGING:**  
121 x 15 gm. place pacs –  
EPA REG. NO. 12455-97

6lb. plastic pail  
EPA REG. NO. 12455-137

### PELLETS

PRODUCT	CODE	PLACE PAC DIMENSIONS (in)
121 x 15 gm. Pail x 2/case 6lb. Pail x 2/case	XP2129 FP2006	4 7/8 x 2 1/4 x 1/4 N/A

# Formus®

## A Lower Toxicity Brodifacoum Bait

- ▶ Specially formulated to appeal to mice, but effective for rats as well
- ▶ 15gm BLOX® provide maximum baiting flexibility
- ▶ At 25 ppm, Formus provides proven results with less active ingredients



**PACKAGING:**  
18 lb. plastic pail –  
EPA REG. NO. 12455-108

### BLOX®

PRODUCT	CODE	15 gm. BLOX DIMENSIONS (in)
18 lb. Plastic Pail	FM4015	1 x 1 x 1

# Terad<sub>3</sub>

## Vitamin D<sub>3</sub> for Structural Control

- ▶ Acute rodenticide with proven palatability and efficacy
- ▶ Excellent weatherability and high melting point up to 200°F



**PACKAGING:**  
4 lb. & 18 lb. plastic pails –  
EPA REG. NO. 12455-106

### BLOX®

PRODUCT	CODE	1 oz. BLOX DIMENSIONS (in)
4 lb. Pail x 2/case	TD4024	1 5/8 x 1 x 1
18 lb. Plastic Pail	TD4051	1 5/8 x 1 x 1

# Terad<sub>3</sub> Ag



## Vitamin D<sub>3</sub> for Organic Production

- ▶ First and only rodenticide listed by the Organic Materials Review Institute (OMRI) and registered by the Environmental Protection Agency (EPA) for use in organic production
- ▶ For Organic Production
- ▶ Active ingredient, Vitamin D<sub>3</sub>, is on the USDA's National Organic Program list



**PACKAGING:**  
18 lb. plastic pail –  
EPA REG. NO. 12455-116

### BLOX®

PRODUCT	CODE	1 oz. BLOX DIMENSIONS (in)
18 lb. Plastic Pail	TD3051	1 5/8 x 1 x 1

# TALPIRID®



## Earthworm-Shaped Mole Bait

- ▶ The first mole bait of its type scientifically proven in laboratory and field studies to kill moles
- ▶ One worm contains a lethal dose of Bromethalin
- ▶ Mimics a mole's natural food source – the earthworm

**PACKAGING:**  
2 trays of 10 worms in box –  
5 boxes per case  
EPA REG. NO. 12455-101

## MOLE BAIT

PRODUCT	CODE	BAIT DIMENSIONS (in)
▶ 2 x 10 Worms x 5/Ctn.	M07150	4 3/4 x 5/16 x 1/4



# ZP®

## Fast Acting Active Ingredient

*Restricted Use Product*

- ▶ Contains the powerful acute active ingredient Zinc Phosphide – kills more quickly than anticoagulant baits
- ▶ Formulated to compete with natural food sources

## OATS

*Restricted Use Product*

PRODUCT	CODE	DIMENSIONS (in)
▶ 45 lb. Bulk Bag	AG5081	N/A

**PACKAGING:**  
45 lb. bulk bag –  
EPA REG. NO. 12455-102



## PELLETS

*Restricted Use Product*

PRODUCT	CODE	DIMENSIONS (in)
▶ 50 lb. Bulk Bag	AG5095	N/A

**PACKAGING:**  
50 lb. bulk bag –  
EPA REG. NO. 12455-17



## POWDER

*Restricted Use Product*

PRODUCT	CODE	DIMENSIONS (in)
▶ 4 x 500 gm. x 8	TP5055	N/A
25 lb. Plastic Pail	TP5060	N/A

**PACKAGING:**  
4 x 500 gm. (1.1 lb.) plastic bottles –  
EPA REG. NO. 12455-16  
25 lb. plastic pail –  
EPA REG. NO. 12455-16





# LIQUA-TOX II®

## Liquid Concentrate

- ▶ Contains the sodium salt of the multiple-feeding anticoagulant Diphacinone
- ▶ Best choice when food is readily available but water is limited
- ▶ 8 individual pouches packed in a zip bag for easy distribution



## LIQUID CONCENTRATE

**PACKAGING:**  
8 x 1.68 oz. pouches x 4 –  
EPA REG. NO. 12455-61

PRODUCT	CODE	POUCH DIMENSIONS (in)
8 pouches/box, 4 boxes/case	LT3217	4 3/4 x 3 x 3/16

# T1 MOUSE™ & T1 RAT™

## Bromethalin BLOX in a Tamper-Resistant Disposable Station

- ▶ Kills rats and mice in two or more days after consuming a toxic dose
- ▶ Dog & child tamper-resistant
- ▶ Station meets the highest level of tamper resistance, based on EPA test protocols
- ▶ Disposable station can be left at a residential account and then discarded once bait has been consumed
- ▶ Can be used indoors or out



## BLOX® IN STATION

PRODUCT	CODE	CTN. DIMENSIONS (in)
<b>T1 Mouse</b> 1 Station/Ctn., 24 Ctn./case 4 Stations/Ctn., 12 Ctn./case	DM2411 DM4814	3 3/4 x 2 5/8 x 1 5/16 7 1/4 x 5 1/8 x 1 5/16
<b>T1 Rat</b> 1 Station/Ctn., 8 Ctn./case	DR0811	7 1/2 x 5 1/2 x 3

**PACKAGING:**  
Pre-loaded station –  
T1 Mouse: EPA REG. NO. 12455-121  
T1 Rat: EPA REG. NO. 12455-122

# PROTECTA® EVO®

## EXPRESS

- ▶ Weighted station with removable tray for easy cleaning
- ▶ Single locking mechanism for quick servicing
- ▶ Ramped entry keeps kids and non-target animals from reaching bait/traps
- ▶ Can hold 2 T-Rex rat traps, 2 Mini-Rex mouse traps or 4 vertical bait rods
- ▶ Dog & child tamper-resistant

### PACKAGING:

Each EVO Express includes station, brick, tray, securing rods & service card. Ships in pallet quantities.  
Available in black and gray



PRODUCT	CODE	DIMENSIONS (in)
Protecta Evo Express Black	EV8001	12 x 10 x 6 1/4
Protecta Evo Express Black (2/case)	EV8400	12 x 10 x 6 1/4
Protecta Evo Express Gray	EV8801	12 x 10 x 6 1/4

## AMBUSH

- ▶ Single locking mechanism for quick servicing
- ▶ Removable tray for easy cleaning
- ▶ Low-profile but accommodates TRAPPER T-Rex Rat Trap
- ▶ Compatible with Sidekick Load-N-Lock system
- ▶ Dog & child tamper-resistant

### PACKAGING:

6 stations per case with bait securing rods, tray and service card



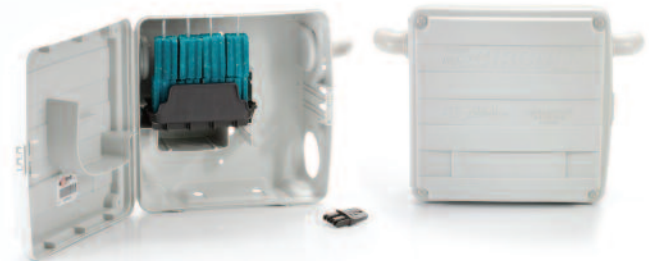
PRODUCT	CODE	DIMENSIONS (in)
Protecta Evo Ambush	EA2000	8 1/2 x 10 1/4 x 4 1/4

## CIRCUIT

- ▶ Built-in disguise includes connectors to make station simulate an electrical box; great for sensitive accounts
- ▶ Can be used horizontally or vertically
- ▶ Single locking mechanism for quick servicing
- ▶ Removable tray for easy cleaning
- ▶ Dog & child tamper-resistant

### PACKAGING:

6 stations per case with plastic connectors, bait securing rods (horizontal & vertical), tray and service card



PRODUCT	CODE	DIMENSIONS (in)
Protecta Evo Circuit Gray	EC8806	9 x 9 1/2 x 4

# PROTECTA® EVO®



## MOUSE

- ▶ Single locking mechanism for quick servicing
- ▶ Holds twice as many BLOX as RTU so more mice can feed from station
- ▶ Works with either BLOX bait or Soft Bait
- ▶ Fits in corners, under pallets and along rodent runways
- ▶ Internal teeth clamp on soft bait paper to minimize paper displacement

**PACKAGING:**  
12 stations per carton with bait securing rods and service labels,  
12 cartons per case



**PRODUCT**  
Protecta EVO Mouse

**CODE**  
EM1212

**DIMENSIONS (in)**  
6 x 4 x 1 1/2



## LANDSCAPE

- ▶ Tamper-resistant rat station designed to blend into the outdoors
- ▶ Holds Bell BLOX and TRAPPER T-Rex rat snap trap
- ▶ Naturally textured for a realistic appearance
- ▶ Single locking mechanism for quick servicing

**PACKAGING:**  
4 stations per case with bait securing rods, full-size liners & service cards  
*Available in sandstone and granite colors*



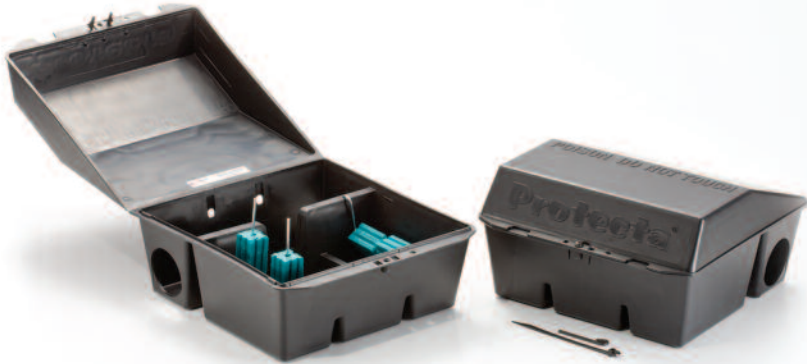
**PRODUCT**  
Protecta Landscape Granite  
Protecta Landscape Sandstone

**CODE**  
LS1200  
LS1250

**DIMENSIONS (in)**  
13 x 11 1/4 x 6 3/4  
13 x 11 1/4 x 6 3/4



# PROTECTA®



## PROTECTA

- ▶ The 'Original' tamper-resistant bait station
- ▶ Made of heavy-duty molded plastic
- ▶ Horizontal and vertical bait securing rods included

### PACKAGING:

6 stations per case with bait securing rods, insert trays & service record cards



#### PRODUCT

Protecta Black

#### CODE

PS2540

#### DIMENSIONS (in)

11 x 11 1/2 x 6



## LP

- ▶ Tamper-resistant rat size bait station
- ▶ Triangular shape designed for corner placements
- ▶ Fits Super-Size BLOX, BLOX, tracking powder, liquid, pellets and cereal baits
- ▶ Dog & child tamper-resistant

### PACKAGING:

6 stations per case with bait securing rods & service record stickers  
Available in gray and black



#### PRODUCT

Protecta LP Black  
Protecta LP Gray

#### CODE

LP2625  
LP2635

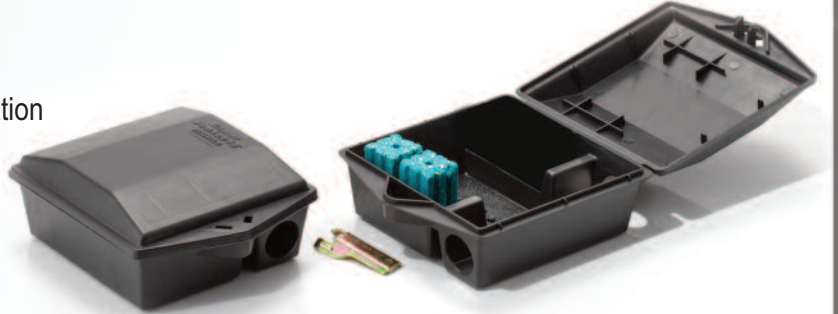
#### DIMENSIONS (in)

13 1/2 x 9 x 3 1/4  
13 1/2 x 9 x 3 1/4

# PROTECTA®

## MOUSE

- ▶ Can be used as a monitor, trap and bait station
- ▶ Studs on the floor provide two positioning options for the TRAPPER Mini-Rex
- ▶ Side-opening design makes servicing the station easy



PRODUCT	CODE	DIMENSIONS (in)
Protecta Mouse	PS2539	6 1/4 X 5 1/4 x 2 1/2

**PACKAGING:**  
12 stations per case with service labels

## KEYLESS

- ▶ Keyless station locks with a quick twist of the lid
- ▶ Innovative circular design incorporates three separate entry points for mice
- ▶ Station allows for three mice to feed simultaneously



PRODUCT	CODE	DIMENSIONS (in)
Protecta Keyless	KP6397	N/A x 4 3/4 x 2

**PACKAGING:**  
12 stations per case with service labels

## RTU

- ▶ Angled entry holes allow it to fit flush against a wall or snug in a corner
- ▶ The perfect size for fitting underneath pallets or appliances
- ▶ Designed to hold Bell's BLOX bait



PRODUCT	CODE	DIMENSIONS (in)
Protecta RTU	PR2620	5 1/4 x 3 3/4 x 1 1/4

**PACKAGING:**  
12 stations in a carton with service labels, 12 cartons per case

# PROTECTA®



**PACKAGING:**  
6 stations per case with bait securing rods & service cards

## SIDEKICK

- ▶ Economical alternative to non-tamper resistant stations
- ▶ Vertical bait securing rods hold up to 8 - 1oz Bell BLOX securely
- ▶ Holds TRAPPER T-Rex rat snap trap
- ▶ Compatible with Sidekick Load-N-Lock securing base



PRODUCT	CODE	DIMENSIONS (in)
Protecta Sidekick	SK4500	9 3/4 x 8 1/2 x 4 1/2



**PACKAGING:**  
6 bases per case  
2 systems per case. (System = 1 bait station, 1 LNL base)

## LOAD-N-LOCK

- ▶ Anchoring system for Sidekick and Ambush
- ▶ Holds two standard concrete bricks for necessary weight
- ▶ Locking mechanism is only accessible from inside bait station



PRODUCT	CODE	DIMENSIONS (in)
Protecta LNL Sidekick	LL4500	14 1/2 x 9 3/4 x 4 5/8



# TRAPPER®



PACKAGING: 24 per case

## HIDDEN KILL

- ▶ Quick, no mess capture and kill
- ▶ Stealthy design blends into surroundings
- ▶ Fully enclosed capture area keeps mouse hidden inside
- ▶ Easy “no-touch” disposal
- ▶ Two way entry allows mice to enter from either direction



PRODUCT	CODE	DIMENSIONS (in)
Hidden Kill	SP2016	6 x 4 x 1.5



PACKAGING:  
TRAPPER 24/7 - 12 per case  
Compatible with TRAPPER LTD  
Glue Traps - see pg. 23

## 24/7

- ▶ Sleek, multiple catch mouse trap
- ▶ Ideal for monitoring and trapping mice and insects
- ▶ Durable plastic won't rust
- ▶ Fits under pallets and in low spaces



PRODUCT	CODE	DIMENSIONS (in)
Trapper 24/7	MC2470	10 x 6 1/2 x 1 3/4



PACKAGING: 12 per case

## PEST MONITOR

- ▶ Two-piece monitor designed for mice and insects
- ▶ Holds a TRAPPER MC glue trap
- ▶ Easy to service when secured



PRODUCT	CODE	DIMENSIONS (in)
Trapper Pest Monitor	PM2000	8 x 4 1/2 x 1 1/4

# TRAPPER®

## T-REX

- ▶ Powerful rat snap trap can be set by hand or foot
- ▶ Patented interlocking teeth for maximum strength & effectiveness
- ▶ Removable bait cup makes servicing easy
- ▶ Patented design allows trap to be secured to pipes
- ▶ Compatible with many Bell rat-sized stations



PACKAGING: 12 per case



PRODUCT	CODE	DIMENSIONS (in)
Trapper T-Rex	ST2000	5 1/2 x 3 x 3 1/2

## MINI-REX

- ▶ Use alone or in PROTECTA bait stations
- ▶ Removable cup incorporated
- ▶ Excellent trigger sensitivity



PACKAGING: 24 per case



PRODUCT	CODE	DIMENSIONS (in)
Trapper Mini-Rex	ST2024	4 x 1 3/4 x 2 1/4

# PROVOKE®

## RAT or MOUSE TRAP GEL

- ▶ Specially formulated trap gel for rats or mice
- ▶ Improves capture rate with any trap
- ▶ Non-toxic and hypoallergenic
- ▶ Won't stain clothing or fabrics



PRODUCT	CODE	DIMENSIONS (in)
Provoke Mouse	PR2092	N/A x 1 5/16 x 5
Provoke Rat	PR8098	N/A x 1 7/8 x 7



PACKAGING:  
Mouse: (2 oz. bottle)  
9 per case

Rat: (8 oz. bottle)  
9 per case

# RODENT BAITERS

## RODENT BAITERS

- ▶ Economical way to place bait where tamper resistance is not required
- ▶ Holds liquid, dry bait and tracking powder
- ▶ Made of black polystyrene — lightweight, yet sturdy



PRODUCT	CODE	DIMENSIONS (in)
Rodent Baiters - Mice	BM2535	5 x 3 1/2 x 1 3/4
Rodent Baiters - Rats	BR2525	9 1/8 x 8 x 4 1/2

PACKAGING:  
**RODENT BAITERS**  
Rat size: 24 per case  
Mouse size: 50 per case

# TALPIRID®

## MOLE TRAP

- ▶ Built using structural grade nylon to withstand the toughest soil conditions
- ▶ Placing and setting the trap is fast, easy and hands-free
- ▶ Professional looking low-profile trap can be reused



PRODUCT	CODE	DIMENSIONS (in)
Talpirid Mole Trap	MT4150	10 1/2 x 5 3/4 x 11 1/2

PACKAGING: 4 per case



# TRAPPER®

## GLUE BOARDS

- ▶ Rat and mouse sizes available
- ▶ Low profile; soft, tenacious glue
- ▶ Rat board available in Pro Pack



PRODUCT	CODE	DIMENSIONS (in)
2-pack for Rats	TR2724	9 3/4 x 4 5/8 x 1/4
2-Pack for Mice	TM2817	4 5/8 x 3 1/4 x 1/4
Bulk Rat	TR2712	9 3/4 x 4 5/8 x 1/4
Pro Pack Rat	TR2700	9 3/4 x 4 5/8 x 1/4
Trapper Tunnel Plastic	TT2570	9 13/16 x 5 3/16 x 3 1/8
Trapper Tunnel Cardboard	TT2571	11 x 4 7/8 x 3
Trapper MC Glue Trap	MC2600	6.5 x 4 x 1.5

### PACKAGING:

- 2-Pack for Rats – cartons of 24 x 2 (48 traps per case)
- 2-Pack for Mice – cartons of 48 x 2 (96 traps per case)
- Bulk Trapper Glue Boards – 48 per case (rat size)
- Bulk Trapper Glue Boards – 96 per case (mouse size)
- Pro Pack – 12 traps in dispenser, 4 dispensers per case
- Trapper Tunnel – 48 per case (cardboard or plastic)
- Trapper MC Glue Traps – 48 per carton, 12 cartons per case

## MAX & MAX FREE

- ▶ Non-toxic disposable glue trap
- ▶ Powerful adhesive coated on cardboard
- ▶ Max Free is non-scented and hypoallergenic



PACKAGING: 72 per case



PRODUCT	CODE	DIMENSIONS (in)
Trapper Max	TL2586	7 3/4 x 5 1/4 x 2
Trapper Max Free	TX2672	7 3/4 x 5 1/4 x 2

# TRAPPER®

## LTD

- ▶ Captures mice, roaches and other insects
- ▶ Non-toxic, disposable glue trap
- ▶ LTD can be folded for use in dusty areas



PACKAGING: 72 per carton,  
18 cartons per case



**PRODUCT**  
Trapper LTD

**CODE**  
TL2506

**DIMENSIONS (in)**  
8 x 4 x 2 1/4

## MONITOR

- ▶ Use as one large trap or separated along perforated lines to create three smaller traps
- ▶ Adhesive backing allows for placement on almost any surface
- ▶ Commitment ramps improve capture rates



PACKAGING: 100 per carton,  
12 cartons per case



**PRODUCT**  
Trapper Monitor  
Trapper Monitor  
w/ Roach Tablets

**CODE**  
TM2600 8 1/4 x 3 1/2 x 1 1/2  
TM2601 8 1/4 x 3 1/2 x 1 1/2

# CHOOSING THE RIGHT BAIT

The level of rodent activity determines the appropriate bait for the job. It may be a new account with a heavy infestation, an existing account with persistent rodent activity, or a preventative program set up to monitor and keep rodents out. Proper selection and application of these baits will determine the success of the Rodent Control Program.

## **CONTRAC®**   **CONTRAC®**   **CONTRAC®**   **ACTIVE: Bromadiolone** **WITH LUMITRACK®**   **SOFT BAIT**



**TYPE:**  
Second generation  
anticoagulant

**ANTIDOTE\*:**  
Vitamin K<sub>1</sub>  
treatment

**GENERAL ATTRIBUTES:**

- Rodents can ingest a toxic dose in a single feeding
- Rodents may continue to consume the bait even after ingesting a toxic dose

**WHEN TO USE:**

- For heavy infestations where there is strong food competition
- To control persistent infestations
- For occasional invaders to ensure they ingest a lethal dose in a single feeding

## **FINAL®**   **FORMUS®**

**ACTIVE: Brodifacoum**



**TYPE:**  
Second generation  
anticoagulant

**ANTIDOTE\*:**  
Vitamin K<sub>1</sub>  
treatment

**GENERAL ATTRIBUTES:**

- Rodents can ingest a lethal dose in a single feeding
- Rodents may continue to consume the bait even after ingesting a toxic dose
- Higher toxicity than CONTRAC® baits

**WHEN TO USE:**

- For heavy infestations where there is strong food competition
- To control persistent infestations



## FASTRAC®

ACTIVE: Bromethalin



**TYPE:**  
Acute

**ANTIDOTE\*:**  
There is no direct  
antidote, however  
there are treatment  
programs available for  
sub-lethal ingestions

**GENERAL ATTRIBUTES:**

- Norway rats, roof rats and house mice cease feeding after consuming a toxic dose
- Bait quantity may be about one-third that used with anticoagulants
- Kills faster than anticoagulants

**WHEN TO USE:**

- Ideal for new accounts
- Knocks the population down to a manageable level

## DITRAC® LIQUA-TOX® II

ACTIVE: Diphacinone



**TYPE:**  
First generation  
anticoagulant

**ANTIDOTE\*:**  
Vitamin K<sub>1</sub>  
treatment

**GENERAL ATTRIBUTES:**

- Multiple feedings typically required for the anticoagulant to be effective
- Generally more bait needs to be consumed to reach a toxic dose
- Less toxic than second generation products

**WHEN TO USE:**

- Great for maintaining control once population is restrained
- For monitoring any new activity

## TERAD<sub>3</sub>® TERAD<sub>3</sub>® AG

ACTIVE: Vitamin D<sub>3</sub>



**TYPE:**  
Acute

**ANTIDOTE\*:**  
There is no direct  
antidote, however  
there are treatment  
programs available for  
sub-lethal ingestions

**GENERAL ATTRIBUTES:**

- OMRI listed (Terad<sub>3</sub>Ag)
- First EPA registered rodenticide for use in organic production
- Kills anticoagulant-resistant Norway rats

**WHEN TO USE:**

- For use in organic production (Terad<sub>3</sub>Ag) and structural control (Terad<sub>3</sub>)

## ZP® ZP® AG

ACTIVE: Zinc Phosphide



**TYPE:**  
Acute

**ANTIDOTE\*:**  
There is no direct  
antidote, however  
there are treatment  
programs available for  
sub-lethal ingestions

**GENERAL ATTRIBUTES:**

- Restricted use product
- Proven palatability

**WHEN TO USE:**

- For economical cleanout of rodent infestations
- Use tracking powder when competing with natural food sources

FOR MICE

FOR FIELD RODENTS

\*FOR TREATMENT PROTOCOLS, REFER TO THE PRODUCT LABEL.

## BELL LABORATORIES MISSION STATEMENT

To be the market leader by developing,  
producing and marketing innovative rodent  
control products of uncompromising quality.

To commit to excellence in customer  
service and to conduct our business with  
the highest integrity.

Bell's mission can only be achieved in a  
stimulating work environment that supports  
personal growth, individual contribution  
and teamwork.



THE WORLD LEADER IN RODENT CONTROL TECHNOLOGY®

Madison, Wisconsin 53704 USA | Ph: (608) 241-0202 | Fax: (608) 241-9631

[www.bellabs.com](http://www.bellabs.com)