

THE BIGGER PICTURE

One versatile solution powered by an advanced generation SDHI and Heritage™ fungicide to control the widest range of root and foliar diseases in ornamental and vegetable plants.

Mural™ fungicide is powered by two active ingredients – Solatenol® fungicide, an advanced generation SDHI (succinate dehydrogenase inhibitor), and Heritage™ fungicide, the industry standard for systemic, broad-spectrum disease control. These active ingredients, and the flexibility to be applied as a foliar spray or drench, make Mural an excellent choice for disease control in both nursery and greenhouse operations.

Better movement for better protection

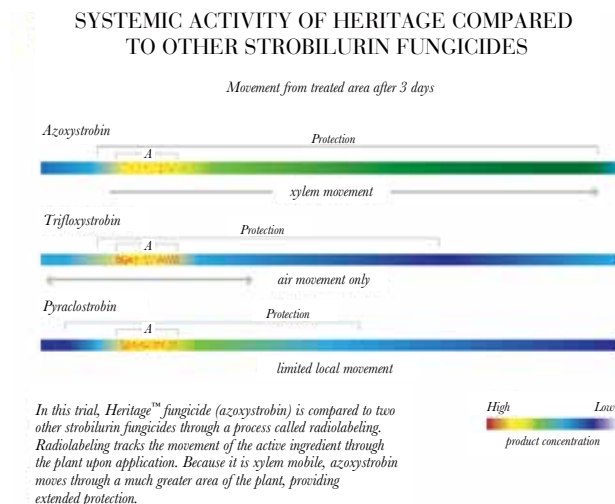
As a foliar spray, Mural penetrates and moves systemically throughout the plant tissue, providing protection to areas that may have been missed during application. When applied as a drench, Mural moves through the roots and into the foliage so all parts of the plant are protected, even new plant growth. Solatenol complements azoxystrobin to offer even greater disease control at a low use rate.

Solatenol

- Elevated performance at low use rates.
- Binds to waxy layer of plants to create a barrier of protection and moves translaminarily, providing additional protection within plant tissue.
- Inhibits spore germination and mycelial growth.

Azoxystrobin

- Superior to other strobilurins because of its strong systemic activity.
- Moves throughout plant tissue when absorbed by leaves and roots, protecting plants from fungal pathogens.
- Controls a wide array of soilborne rots and foliar diseases.
- Inhibits spore germination, infection, mycelial growth and limits sporulation.



Untreated

2 oz. drench – 24 days
after inoculation

When applied as a drench, the systemic activity of Mural provides excellent control of powdery mildew on petunias.

Key benefits of Mural

- Application flexibility – can be used in either foliar spray or drench treatments
- Dual modes of action reduce the potential of resistance
- Effective at low use rates
- Unmatched systemic movement
- Prevents and controls more than 50 root and foliar diseases
- Labeled for a wide range of ornamentals, including use on certain vegetable plants
- Restricted-entry interval (REI) of 12 hours

Protects against more diseases for better control and picture-perfect crops

Mural is labeled to prevent and control more than 50 ornamental diseases, including the most common and problematic root and foliar diseases on ornamental and vegetable plants, such as*:

- Anthracnose
- Botrytis
- Downy Mildew
- Leaf Spots
- Powdery Mildew
- *Rhizoctonia*
- Rusts
- *Sclerotium rolfsii*
- *Pythium* (Suppression)

*Not all pathogens are listed. See product label for complete list.

Versatility that enhances your options

Mural can be applied as a foliar spray or drench to control the most common foliar and soilborne diseases on ornamentals, and it is labeled for use as a foliar spray on select vegetable plants grown for resale. When applied as a drench for protection against soilborne diseases, the systemic activity of Mural suppresses diseases like powdery mildew and rust. It can also be used in multiple growing environments, including greenhouses, shade and lath houses, retail nurseries, outdoor nursery production and commercial landscapes.

Recommended Application Rates:

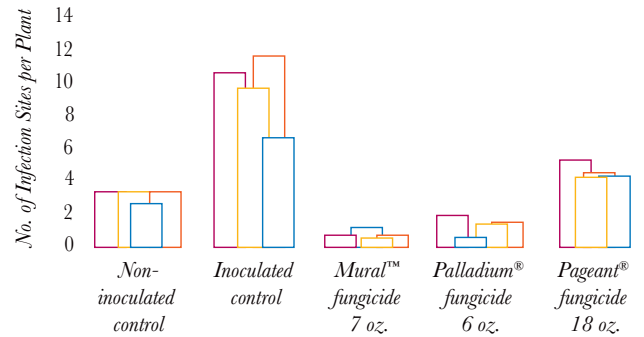
Foliar: 4-7 oz./100 gallons. Reapply at 7 – 21 day intervals as needed.

Drench: 2-3 oz./100 gallons. Reapply at 7 – 21 day intervals as needed.

For more information on how Mural fungicide focuses on the bigger picture of disease control to keep your plants picture perfect, please visit www.MuralFungicide.com.

Research from the University of Florida shows the effectiveness of Mural on hard-to-control diseases like Anthracnose.

CONTROL OF ANTHRACNOSE (*COLLETOTRICHUM GLOEOSPORIODES*) ON IMPATIENS



DAT2 = Days after second treatment

Treatment: Two foliar applications: 14 day interval

2014 – Norman, University of Florida

8DAT2

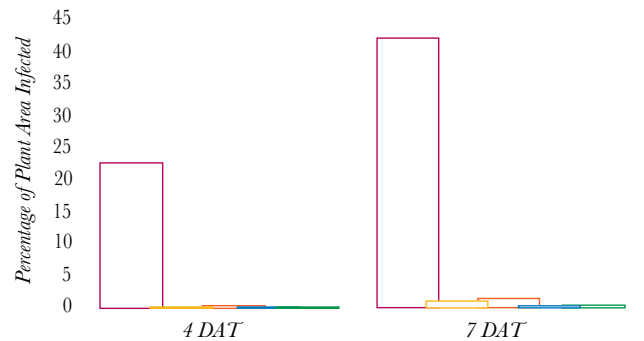
16DAT2

22DAT2

29DAT2

Mural also provides great control of Botrytis, a prevalent disease that can affect bedding plants like geraniums, at a low use rate.

CONTROL OF BOTRYTIS ON GERANIUM



DAT = Days after treatment

Treatment: Foliar

2014 Vero Beach Research Center

Inoculated control

Non-inoculated control

Mural™ fungicide 4 oz.

Mural™ fungicide 7 oz.

Pageant® fungicide 14 oz.

