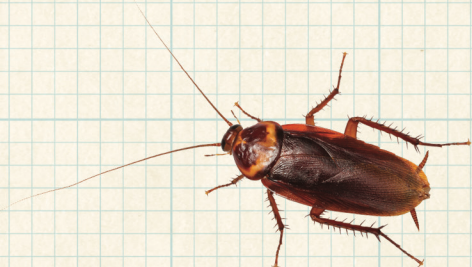




SCOPE OF SERVICE:
MAGNETIC ROACH BAIT™



100 Nisus Drive • Rockford, TN 37853 USA
800.264.0870 • www.nisuscorp.com

MAGNETIC ROACH BAIT™

SCOPE OF SERVICE

(ALWAYS READ AND UNDERSTAND LABEL DIRECTIONS COMPLETELY BEFORE ANY APPLICATION.)

I. INTRODUCTION

Cockroach control is a major source of business for many Pest Management Professionals. Secretive hiding, rapid reproduction and potential resistance to some pesticides and baits in some species can make cockroach control a real challenge, which can lead to unhappy customers.

Magnetic Roach Bait is an easy-to-use, long-lasting, attractive borate bait that can be used to control or prevent cockroach infestations. It contains 33.3% boric acid active ingredient and specially formulated food components to provide a high level of attractiveness for great control of cockroach populations.



Magnetic Roach Bait is packaged in 1.23 oz. reservoir tubes. The bait can be applied using the plunger unit that comes with the bait or can be applied using the specially designed True Blue Bait Gun to deliver more uniform amounts.

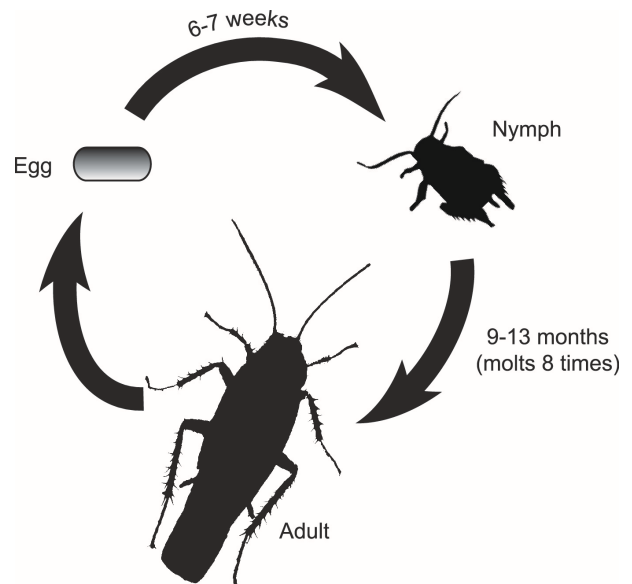
Magnetic Roach Bait works extremely well as a maintenance bait to keep small populations from becoming large adult cockroach populations. The long-lasting active ingredient integrates into cockroach fecal deposits that are fed on by developing nymphs, controlling nymphs before they can become adults.

II. COCKROACH BIOLOGY

Cockroaches develop by incomplete metamorphosis: egg, nymph and adult. During a normal inspection, you will probably find all three stages.

Eggs of cockroaches are retained as a group in an egg case (ootheca). Some species of cockroaches will drop the egg case, some will glue the case to a surface and others, like the German cockroach, will carry the egg case until the young are ready to hatch.

The young nymphs resemble the adults except for size; however they are wingless and have not yet developed reproductive organs. The nymphs



reach the adult stage through a series of molts. The number of molts depends on the species of cockroach.

The adults and nymphs of most structural-infesting cockroaches spend the bulk of their time hiding in cracks and crevices and out-of-the-way harborages. They generally only come out at night or in darkness to feed.

III. CONTROL MEASURES

a. **Inspection:** A professional and thorough inspection is required to determine all the potential harborage sites for cockroach development. Different species will develop in different areas. Major areas to inspect in the home are kitchens and bathrooms, especially in and around cabinets, sinks and appliances. Different cockroach species can also develop in bedroom dresser drawers, attics, basements, crawlspaces, utility areas, and boiler and furnace rooms. It is also important to inspect around the home's exterior in heavy shrubbery and mulch. In a restaurant, look in all food prep, storage, serving and disposal areas as well as harborages such as equipment and ceilings.



b. **Identification:** It is very important to properly identify the cockroach species. Some of the most common cockroaches you will encounter in a structure are German cockroaches, American cockroaches, oriental cockroaches, brown-banded cockroaches, smoky brown cockroaches and other species, depending on the area of the country.

c. **Sanitation:** One of the basic and best control measures for any species is to eliminate its food sources. Clean up food spills and food crumbs in a kitchen. Clean up garbage and other organic materials. In a commercial setting, work with management to ensure proper cleanup.



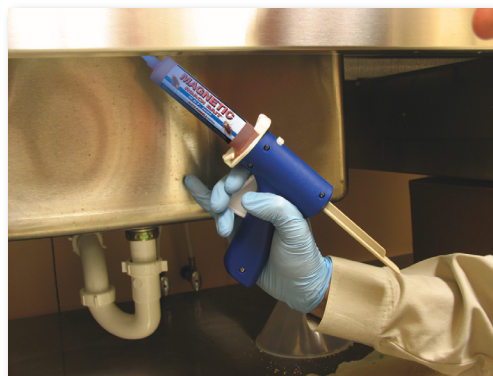
d. **Exclusion:** Keeping the cockroach out of a development area is also an important control measure. Caulking cracks and crevices in kitchens around cabinets and other areas will block potential harborage spots. Caulking cracks around doors and windows as well as screening windows and soffit vents will help keep cockroaches out of structures and attics. Your customer should also inspect items being brought into the structure for possible infestations.

IV. GENERAL APPLICATIONS FOR COCKROACH CONTROL

Magnetic Roach Bait can be applied in homes, restaurants, food handling establishments, markets, schools, warehouses, factories, offices, hotels, motels, hospitals, nursing homes, grocery stores, apartment buildings, industrial plants, theaters, ships, boats, trains, yachts, camps, mobile homes, buses, zoos, kennels, military bases, libraries, utilities and new construction.

For general cockroach control, apply bait under and behind refrigerators, stoves, sinks, dishwashers, washing machines and dryers, and into openings around drains, sewers and manholes, water pipes and electrical conduits. The bait can also be applied into cracks and crevices, in corners of cabinets, cupboards and behind drawers. Apply in areas inaccessible to children and pets and avoid contamination of feed and foodstuffs. These areas of listed applications are where cockroaches spend most time and are apt to feed on the bait.

Even though Magnetic Roach Bait may be attractive to cockroaches up to a year, use it in your normal regular maintenance service to control and eliminate populations.



V. APPLICATIONS FOR COCKROACH CONTROL IN FOOD AND FEED HANDLING ESTABLISHMENTS

a. *Food Areas – Application limited to crack and crevice treatments only*

This includes:

- Areas for receiving, storage, packing (canning, wrapping, boxing) preparing, edible waste storage
- Enclosed processing systems such as mills, dairies, bakeries, restaurants or anywhere food or feed is stored, processed, prepared or served
- Serving areas during times when food is exposed and the facility is in operation.

Apply in small amounts directly into cracks and crevices at points between different elements of construction, between equipment and floors, as well as openings leading to void and hollow spaces in walls, equipment legs and bases, conduits and motor housings. Smaller and numerous bait placements may provide for better cockroach control. Again, these are the areas where cockroaches would spend most of their time and are apt to feed on the bait.

Avoid depositing the bait into exposed food or onto food prep and serving surfaces.

b. *Serving Areas*

This includes areas where food is served, such as dining rooms, but excluding areas where food may be prepared or held.

Apply as a spot treatment to selective surfaces such as baseboards (only those that are inaccessible to children), under elements of construction and into cracks and crevices.



Avoid treating areas likely to be in contact with food. Do not apply in the area when food is exposed or being prepared or served.

c. Non-Food Areas

This includes garbage rooms, lavatories (floors, drains to sewer entries and vestibules), offices, locker rooms, machine rooms, boiler rooms, garages, mop closets and storage.

Apply to baseboard areas (not accessible to children), around water pipes, surfaces behind and beneath sinks, lockers, tables, pallets and similar areas where cockroaches hide or may enter.

Note: Do not apply bait into areas that have been or will be treated with chemicals or areas that routinely come into contact with water or cleaning materials. Do not place bait where it can be washed or transferred onto food or food prep areas.



VI. MONITORING

You can't really tell how the baiting program is progressing without monitoring your progress. Small sticky trap monitoring stations placed in potential population development areas can give you an idea on cockroach populations, including adults and nymphs. These stations can be placed in corners, behind drawers and in hidden areas behind equipment, or in out-of-the-way areas in attics, storage rooms and furnace rooms. Always document the locations of the monitoring stations on a graph for easy reference and date each station when placed for tracking and trending purposes.

VII. FOLLOW-UP

Good communication with the customer is vital. To have the best control program possible, it is very important to have customer cooperation. Teach your customer to be aware of the ways in which they will benefit from good sanitation and exclusion.



100 Nisus Drive • Rockford, TN 37853 • 800.264.0870 • www.nisuscop.com

Magnetic Roach Bait and Nisus Corporation are trademarks or registered trademarks of Nisus Corporation.
©2022 Nisus Corporation #MRB-SOS-0422